



DareAudioSys Quick Start Guide

Welcome to DareAudioSys

DareAudioSys represents the next generations of DareAudioSys system design software.

This guide will help you understand the functionality of DareAudioSys. You will be able to map a system and control other users access to specific aspects of that system.

The guide is organized as follows:

Getting Started


Contact Information

Getting Started

Installation

Support Operating Systems:

32/64 bit versions of Windows® XP/Vista/7/8.1/10

No support for  Mac OS® Operating System.

Minimum Performance Guidelines:

CPU: 64-bit dual core @ 2.0GHz or better.

Optimal Performance Guidelines:

CPU: 64-bit dual core @ 2.5GHz or better

RAM: 4GB or more

OS: 64-bit windows 8.1/10

Software Layouts

DareAudioSys

File Connect Setting Edit Language Upgrade About

Tabs:

File, Connect, Setting, Edit, etc,

Device Lists:

Processor

Device 1#

Device 2#

Device 3#

Device 4#

Device 5#

Device 6#

Device 7#

Device 8#

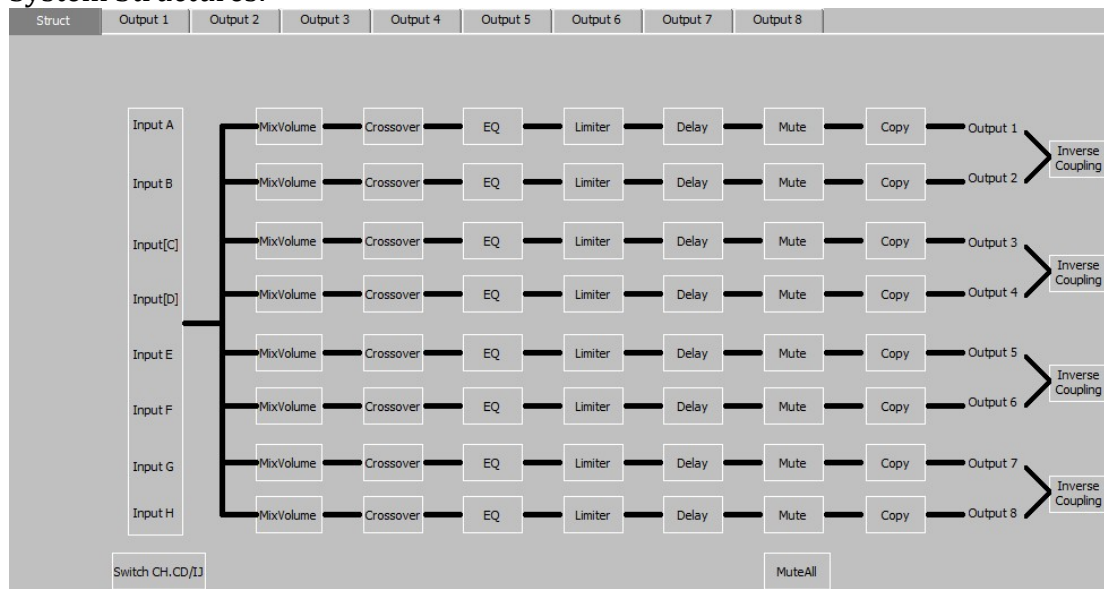
Device 9#

Device 10#

Device 11#

Device 12#

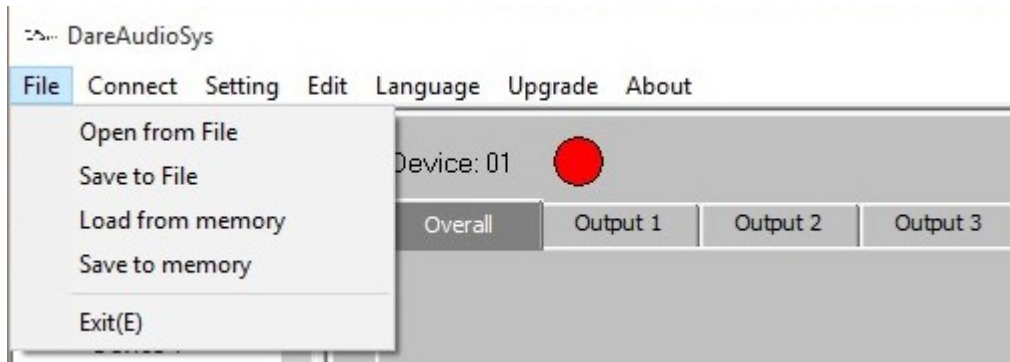
System Structures:



Current Program Display:

Current program: Dare1

File Menu



Open from file

Select file to open. This will close the current DareAudioSys file.

Save to file

Save current data to an opened file.

Load from memory

Load your own presets from the internal memory of the selected device.

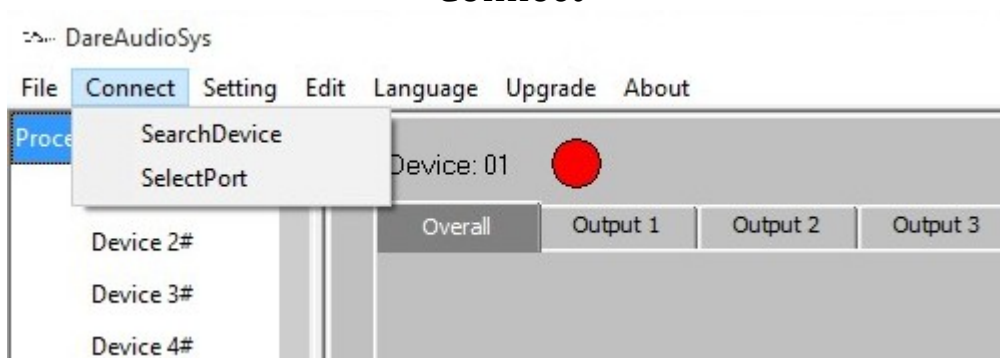
Save to memory

Save your own presets into the internal memory of the selected device.

Exit

Close DareAudioSys program immediately.

Connect



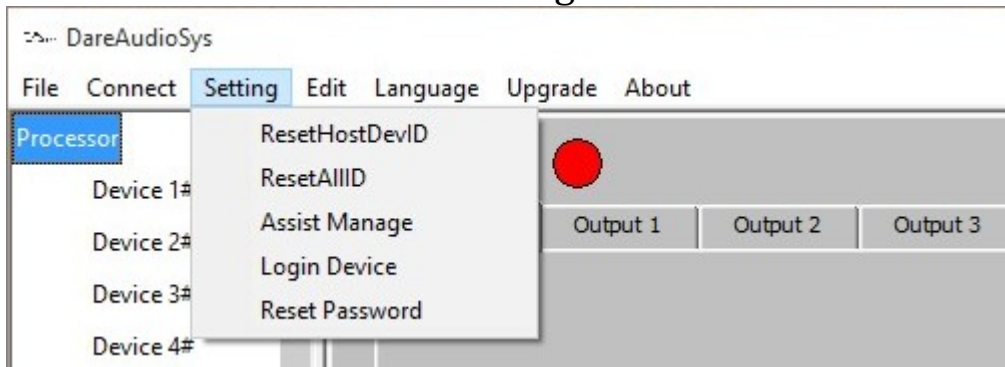
Search Device

Search all connected compatible device.

Select Port

This function allows you to connect with device either by USB or RS485.

Setting



Reset Host DevID

Reset Device ID number for current device.

Reset ALLID

Reset Device ID for all devices connected in the whole network.



Assist Manage

There are 4 functions to change the working mode of this amplifier.

Volume control: Enable/Disable the knob on the device for control the main volume.

Hardware Load: Use DIPs at the rear panel of HL2/HL3/HL4. No effective for other device.

Temperature: Amplifier output power will change automatically when temperature is too high when switched on. Power output will turn off output immediately if turned off.

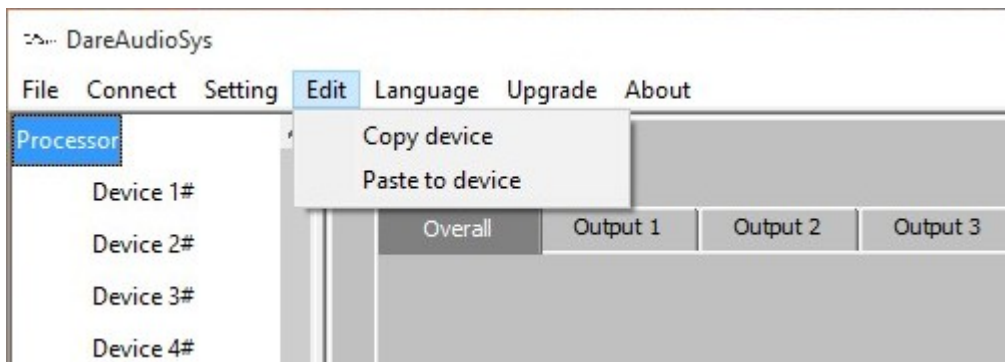
Login Device

Type your DSP login password to modify the settings.

Reset Password

Change DSP administration password.

Edit



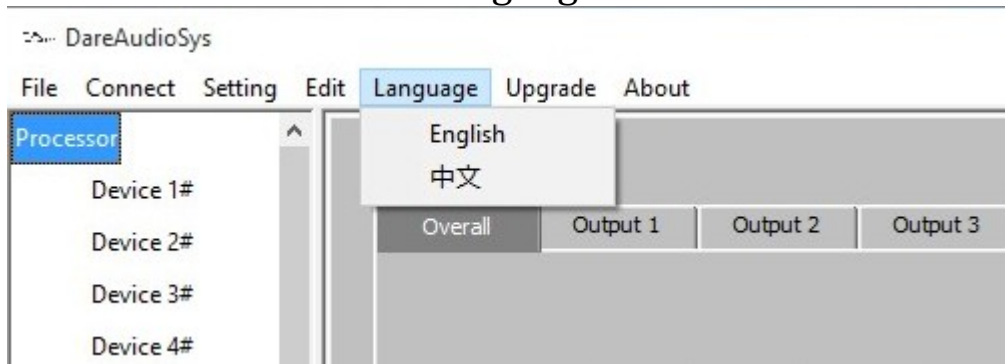
Copy device

Generate the device setting file with the name *.xcc into #users#/documents/DareAudioSys Data/ folder. This file can be used for transfer to other devices.

Paste to device

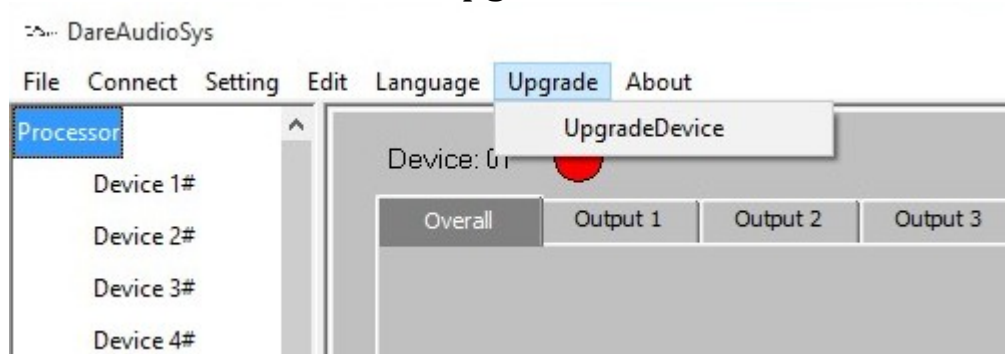
Load generated device file to other device. Device should be at the same model.

Language



There are 2 language options to choose both in English and Simplified Chinese.

Upgrade



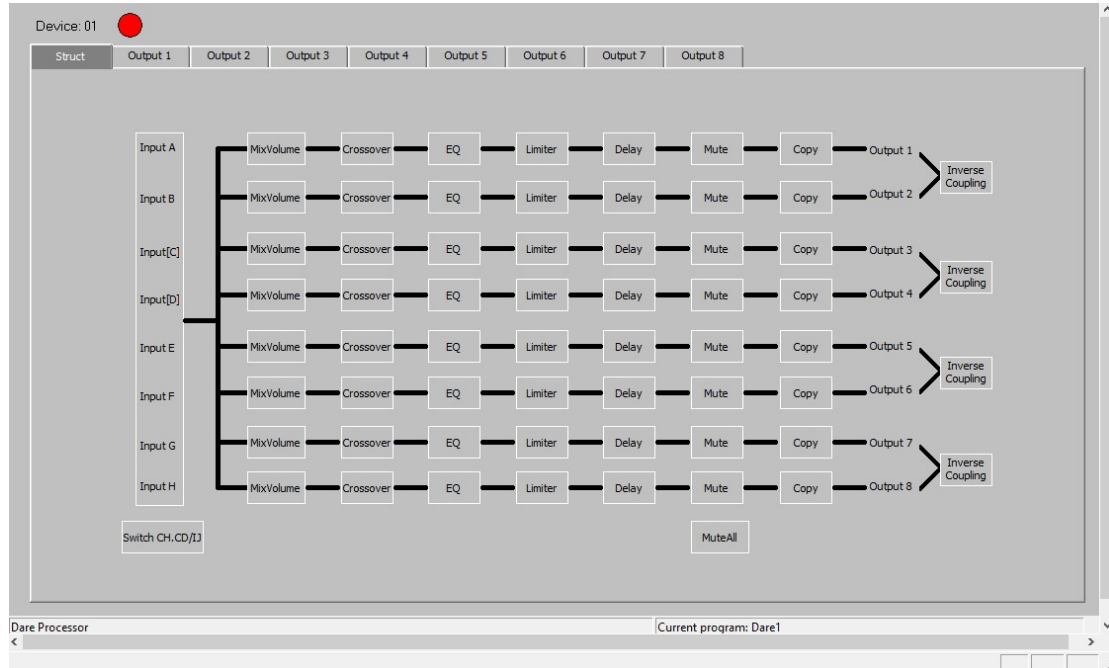
This tools uses for device firmware update by end user. Please disconnect all devices with computer and follow the instructions at the software upgrade page.

About

For check the software version information.

Panels

Structure



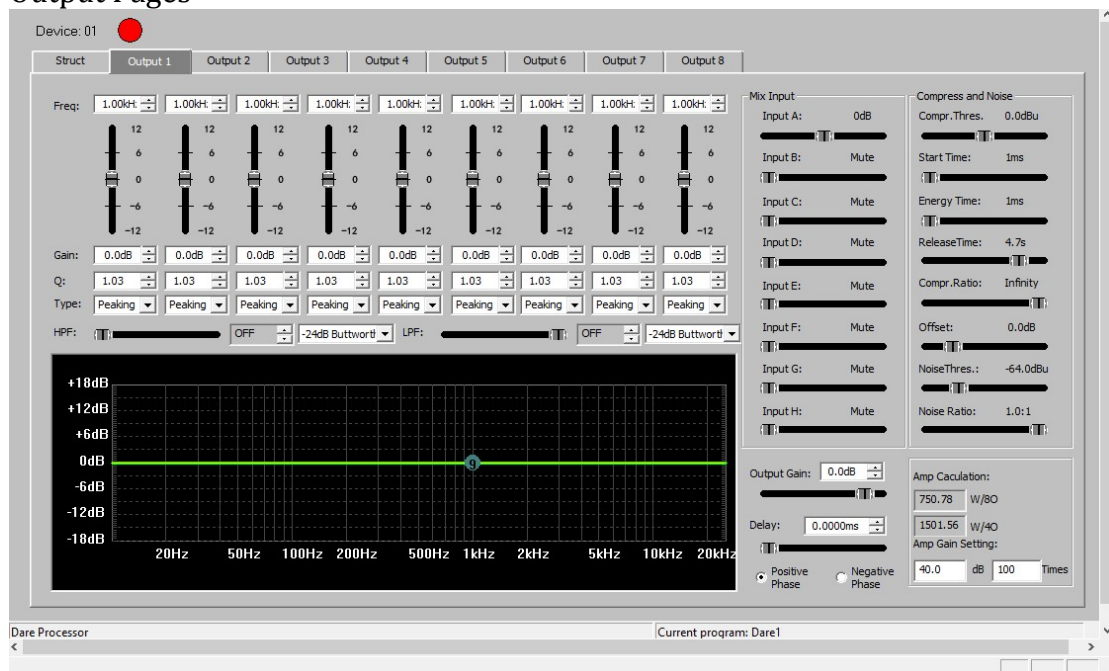
There are 8 inputs in the DSP module. Actual input ports amount depends the device you are using. For example, HL2 has 2 inputs. So only input A and B is available to control. Other inputs will be no use.

Inverse Coupling

Each 2-neighboring channel can be set as inverse coupling mode. It will be set as bridged mode after you click that button. No settings available for the 2nd channel.

For example, if you use output channel 1&2 at inverse coupling mode. You can only change the parameters for channel 1. That will work. But when you load another preset or other machine file. Inverse coupling mode should be re-setup.

Output Pages



There are 8 output pages to control the each outputs separately. Each page contains the parameters of each output. 9-point parametric EQ, input routing, compressor and noise gate.

Equalizer

Each output channel has a 9-point parametric equalizer. Curve can be also set as Hi-Shelf or Lo-Shelf.

Crossover

Change the frequency range of the output channel to fit the specification for the speaker driver.

Mix Input

Mix input use for change the input levels for each input port routing to output.

Output Gain

Attenuate the output gain level for each channel.

Delay

Set the delay time for each channel.

Phase position

Set the phase positive or negative.

Compressor and Noise Gate

Set the parameters of the compressor and noise gate.

Power Calculation

This is a simple calculator for user to estimate the actual power output for the amplifier.

Contact Information

Address: No.33 Link International Industrial Park. No.96 Shuilianshan Rd.
Nancheng Dist. Dongguan,Guangdong,China

Contact name: Vanessa Fan

Email: vanessa@dareaudio.com

Telephone +86-769-27283055