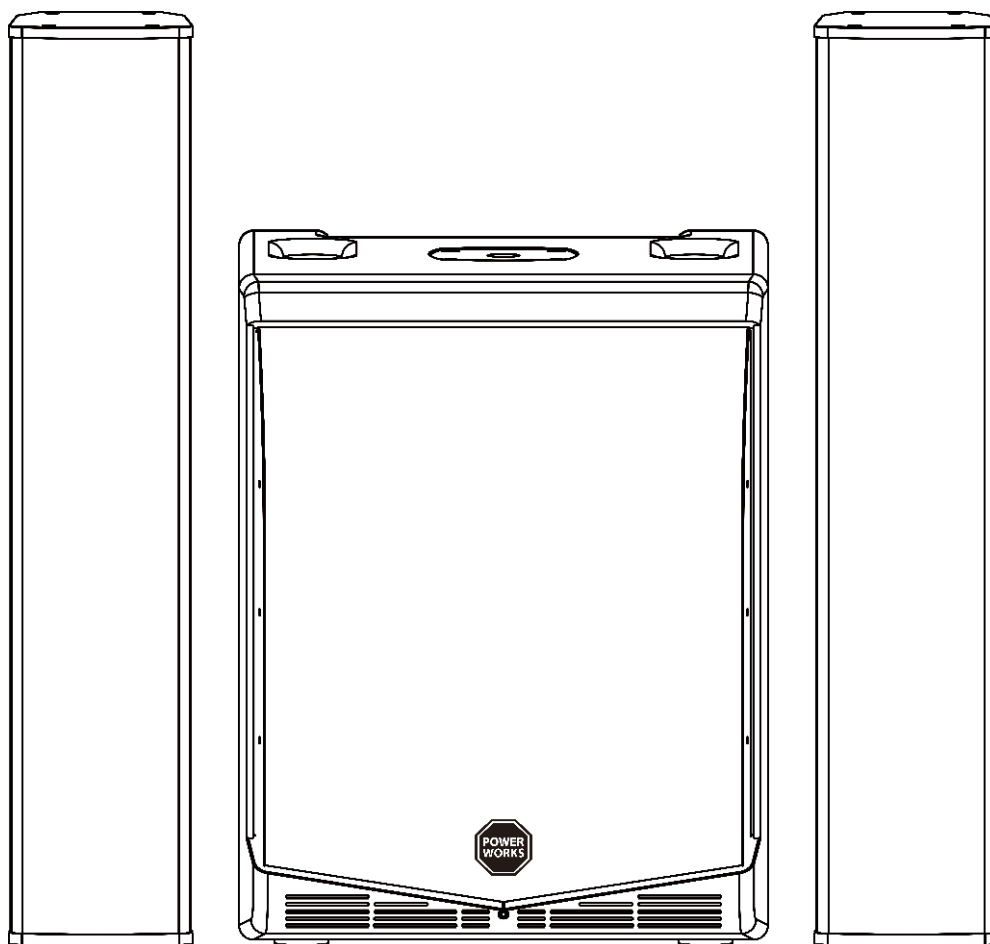


USER MANUAL



MERCURY P10.2



SAFETY INTRODUCTION

1. Please read the manual carefully and keep it for future reference.
2. All safety instructions and warnings must be adhered to. They are part of the manual and must be kept with the manual.
3. Any guarantee claims are rendered invalid if damage occurs due to non-observance of these operating instructions. We assume no liability for any consequent damage.
4. We assume no liability for personal injury or damage to property caused by incorrect handling or non-observance of the safety instructions. Any guarantee claims expire in such cases.
5. Unauthorized conversions and/or modifications of the appliance are not permitted for safety and licensing reasons (CE).
6. The appliance is approved for operation in dry, closed rooms only. Do not operate the device nearby water, such as in bathrooms or nearby swimming pools.
7. The appliance may not be exposed to extreme temperatures ($< +5^{\circ}\text{C}$ / $> +35^{\circ}\text{C}$) in operation.
8. The appliance may not be subjected to strong vibrations or heavy mechanical strain.
9. The appliance may not be exposed to excessive moisture (due to dripping or sprayed water, for example).
10. Do not place any recipients filled with liquids, such as glasses or vases, on top of or directly next to the appliance. They could fall over, causing water to enter the appliance. Never pour out liquids above the appliance. Do not place any small objects, such as coins or paper clips, on the appliance since they could fall inside the appliance. You run a high risk of causing a fire or life-threatening electrocution! If any liquid or objects enter the appliance nevertheless, pull the mains plug out of the socket immediately and contact a specialist.
11. The appliance has been constructed according to protection class I. The power plug must only be plugged into a protection class I outlet. The voltage and frequency must exactly be the same as stated on the device. Wrong voltages or power outlets can lead to the destruction of the device and to lethal electrical shock.
12. 110- 240 Vac, 50/60 Hz mains socket may be used as source of power for the appliance. Never try to operate the appliance with any other voltage.
13. Only pull the mains plug out of the socket by the intended gripping surface. Do not pull it by the cable.
14. Never plug the mains plug in or out with damp or wet hands.
15. Always pull the mains plug out of the mains socket:
16. Before cleaning the appliance
17. If there is a thunderstorm
18. If you will not be using the appliance for a long period of time (> 1 week)

19. Electrical appliances must be kept out of the reach of children. Be particularly careful if children are present. Children are not aware of the hazards involved in handling electrical appliances improperly. Children could attempt to poke objects into the appliance. There is a life-threatening danger of electrocution.

20. Do not leave the appliance unattended while operating it.

21. Never place the appliance on an unstable or movable surface. Persons could be injured or the appliance damaged by it falling down.

22. When using a rack, make sure it is in a stable position and is transported securely. Installation on uneven, slanted surfaces or stopping the rack abruptly during transport can result in the rack overturning or appliances falling from or out of the rack and injuring people.

23. Live components can be exposed by opening covers or removing components (unless this can be done without tools). Contact points can also be live. If the appliance has to be opened in order to calibrate, service, repair or replace components or assemblies, all of its poles must be disconnected from all sources of voltage first. If the appliance has to be kept open and under voltage during maintenance or repairs, this work may only be carried out by a specialist who is familiar with the risks involved and the relevant regulations.

24. Never connect the appliance directly after transferring it from a cold to a warm room. The condensation water that forms could destroy the appliance or result in an electric shock. Allow the device to reach room temperature before connecting it. Wait until the condensation water has evaporated. This can take some hours.

25. Do not place any naked flames such as those of burning candles on or next to the appliance.

26. Do not place the appliance on soft surfaces such as carpets or beds. Do not cover the air vents of the appliance. Do not obstruct the air circulation with objects such as magazines, table cloths or curtains. This prevents the dissipation of heat from the appliance and can result in overheating.

27. Only use the appliance in a moderate climate, not in tropical environments.

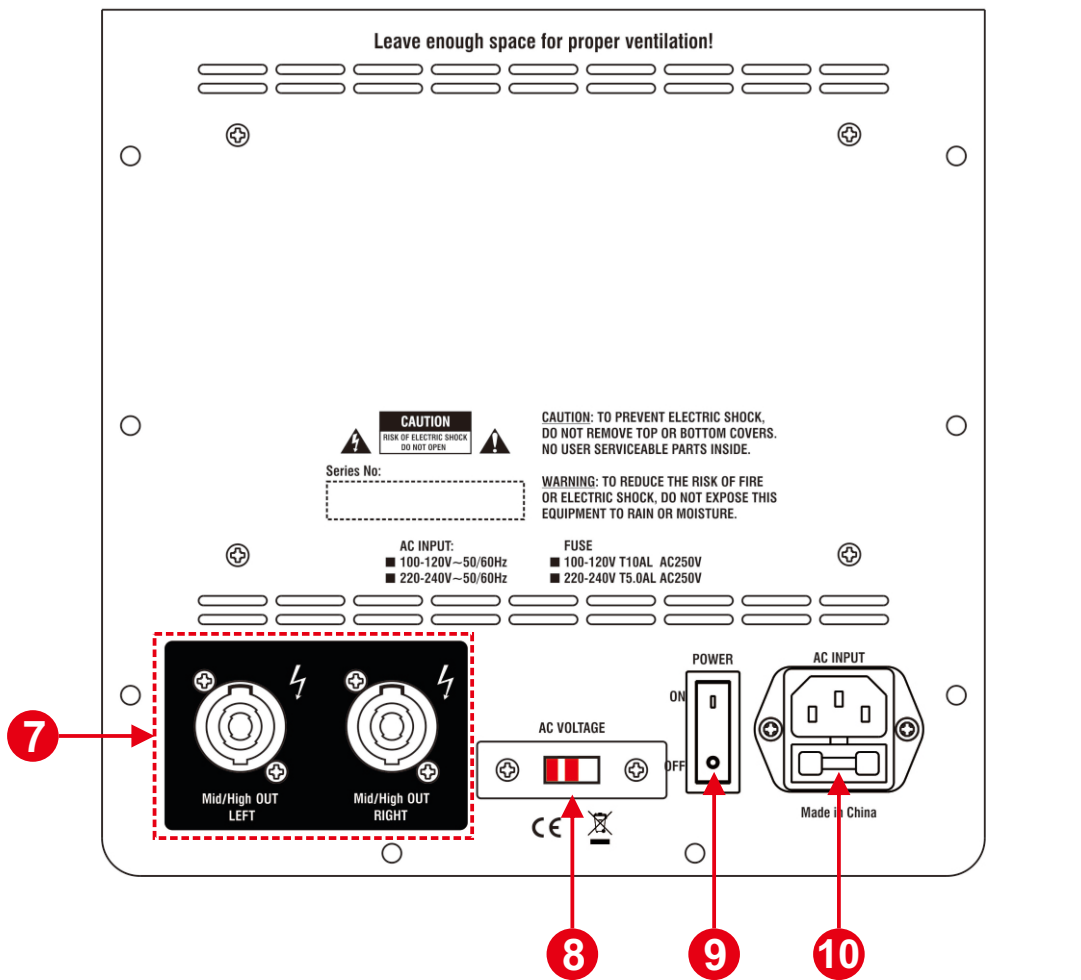
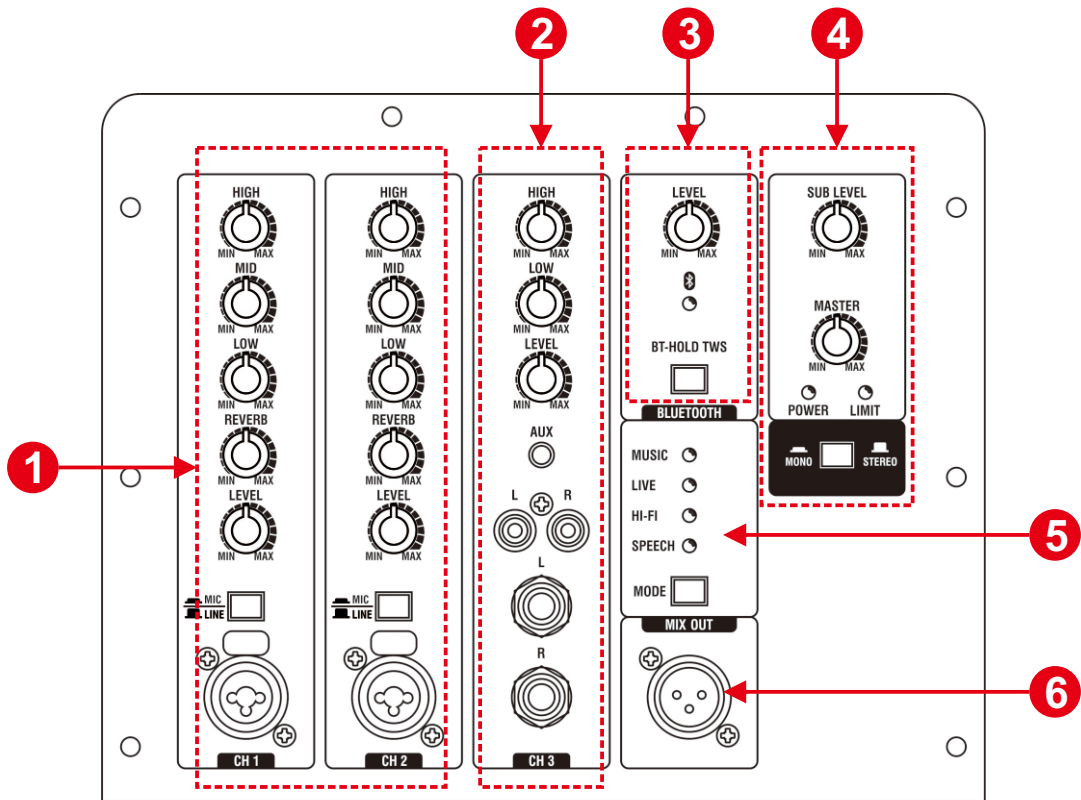
28. All persons involved in operating, installing and servicing the appliance and putting it into service must be trained and qualified accordingly and observe these operating instructions.

29. Defective mains cables may only be replaced by specialists. Danger of shock hazard!

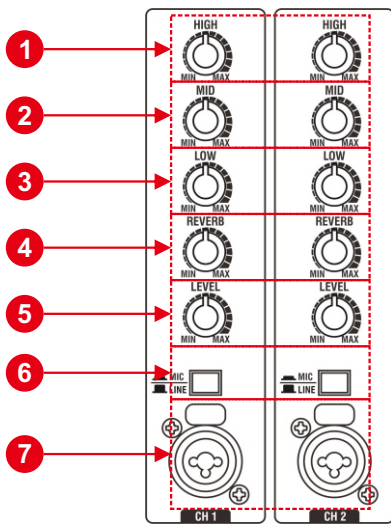
30. Do not leave the packaging material lying around carelessly since it can become a source of danger for children playing with it.

31. The accident prevention regulations and the regulations of the employers' liability insurance association should be observed at commercial institutions.

32. If you are not sure about the correct connection or if questions arise which are not answered by the operating instructions, please do not hesitate to contact support or a specialist of your choice. Consult a specialist if you are in doubt about the operating principle or the safety of the product.



1. MONO MIC/LINE INPUTS (CH1/CH2) SECTION



1. HIGH CONTROLS

These controls adjust the amount of high frequencies for each channel.

2. MID CONTROLS

These controls adjust the amount of middle frequencies for each channel.

3. LOW CONTROLS

These controls adjust the amount of low frequencies for each channel.

4. EFFECT CONTROLS

These controls adjust the amount of effect for each channel.

5. CHANNEL VOLUME CONTROLS

These controls adjust the volume level for each channel.

6. MIC/LINE SELECTORS

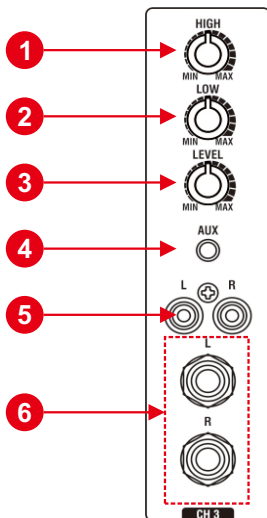
They allow to select between a microphone (XLR) input and a line (1/4" jack TS) input.

WARNING: Please use MIC position only for Microphones.

7. COMBO INPUT sockets

These input sockets accept 1/4" jack TS and XLR male connectors (balanced/unbalanced).

2. AUX STEREO INPUT (CH3) SECTION



1. AUX IN HIGH CONTROL

This control adjusts the amount of high frequencies of AUX IN 3/4.

2. AUX IN LOW CONTROL

This control adjusts the amount of low frequencies of AUX IN 3/4.

3. AUX IN VOLUME CONTROL

This control adjust volume level of AUX IN 3/4.

4. AUX IN MINI JACK STEREO INPUT

This Input can be used with Laptops, Smartphone or other electronic devices that have Mini Jack Stereo Output.

WARNING: Please avoid to use AUX IN 3/4 RCA, Jack MONO TS and MINI JACK STEREO inputs at the same time.

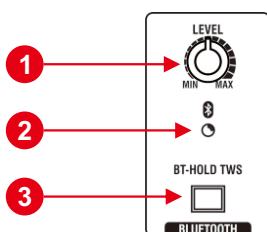
5. AUX IN RCA STEREO INPUT

RCA Stereo Input that can be used with Mp3 player, CD player or other electronic devices that have RCA stereo output.

6. AUX IN JACK TS STEREO INPUT

1/4" jack TS Stereo Input that can be used with electronic keyboard, instrument preamp or processor, electronic drum machine, etc.

3. BLUETOOTH SECTION



1. BLUETOOTH VOLUME CONTROL

This control adjust the volume level of music files coming from Bluetooth.

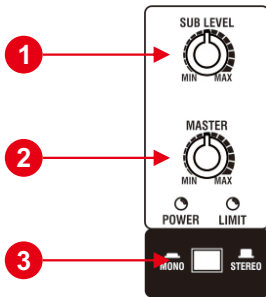
2. BLUETOOTH PAIR LED

This LED lights up when a remote device with Bluetooth has been paired.

3. BLUETOOTH PAIR SWITCH

This switch enables Bluetooth pairing with a remote Bluetooth device.

4. MASTER CONTROL SECTION



1. SUBWOOFER VOLUME

This control adjusts the low frequencies level related only to the subwoofer.

2. MASTER VOLUME

This control adjusts the master volume level of the LIVEMAKER X system.

3. MONO/STEREO SWITCH

When STEREO MODE is selected, MERCURY P10 routes the two signals from the left and right inputs to the corresponding satellite speakers. If a MONO signal is sent to either the left or right channel of MERCURY P10, enabling the MONO MODE will route the signal to both satellite speakers. When MONO MODE is selected, and a STEREO signal is used, both the left and the right channels will be summed.

5. AUDIO PRESET (DSP) SECTION



In this panel section it is possible to change the audio response adjusting the timbre to the relevant applications. By pressing the DSP PRESET switch, it is possible to scroll the following modes:

1. MUSIC: To be used for music recording and playback.

2. LIVE: The ideal preset for most “live” application.

3. DJ: Recommended for installations in discos and clubs.

4. SPEECH: This preset allows the best speech intelligibility.

The selected mode will be indicated by the relative LED.

6. MIX OUT SECTION



It is a XLR output that contains the mix of all inputs and all controls. It can be used to route the audio signal to another destination such as recording device, monitor, subwoofer or to another PA System.

7. OUTPUT CONNECTORS

Left and Right channel have a Speakon output for connecting to the satellite speakers.

8. AC MAINS SELECTOR

This selector allows you to select the input supply voltage. It is protected by a plexiglass cover to prevent an accidental and incorrect voltage selection.

9. POWER Switch

Press the switch to the ON position to turn the system on and to the OFF position to turn it off.

10. IEC Socket with Fuse holder

Plug the power cord into an AC socket properly configured for your particular model. In case of fuse burn, to prevent the risk of fire and damaging the unit, please use only of the recommended fuse type as indicated in the rear panel silkscreening. Before replacing the fuse, make sure the unit turned off and disconnected from the AC outlet

TECHNICAL SPECIFICATIONS

Model:	MERCURY P10.2
Type:	Portable Column PA Speakers
Speaker Type:	2.1 Portable System
Max.SPL:	121dB
Frequency Range:	50Hz-20kHz
Satellite:	
RMS/peak Power Capacity:	150W/450W(each satellite speaker)
Frequency response:	250Hz-20kHz
Sensitivity (1m/1W):	98dB
Max. SPL (@1m):	121dB
Nominal impedance:	8ohm
Input:	1 x Speakon connector
LF driver:	NO
HF driver:	6 x 2.75" Wideband Speakers" voice coil
Crossover frequency:	250Hz, -12 dB/octave
HF protection:	Short protection
Pole mount:	Ø 25mm
Housing material:	ABS
Dimensions (WxDxH):	Satellite speaker: (2x)107x107x560mm
Net weight:	Satellite speaker: (2x) 1.8kg
Subwoofer	
Subwoofer amplifier	300W RMS @ 4ohm
Satellites amplifier	150W RMS @ 8ohm (for each satellite speaker)
Frequency response (Sub)	50Hz-250Hz
Sensitivity (1m/1W)	95dB
Max. SPL (@1m)	121dB
LF driver	1 x 10" Woofer 2.0" voice coil
Inputs:	2 x XLR/6.3mm Jack Combo, 3.5mm Jack, 6.3mm Jack L + R/RCA/Bluetooth
Pole Mount (subwoofer)	M20 thread
Dimensions (WxDxH)	Subwoofer: 360x455x521.5mm
Net weight	Subwoofer: 19kg

