

# USER MANUAL



**APOLLO 10A**

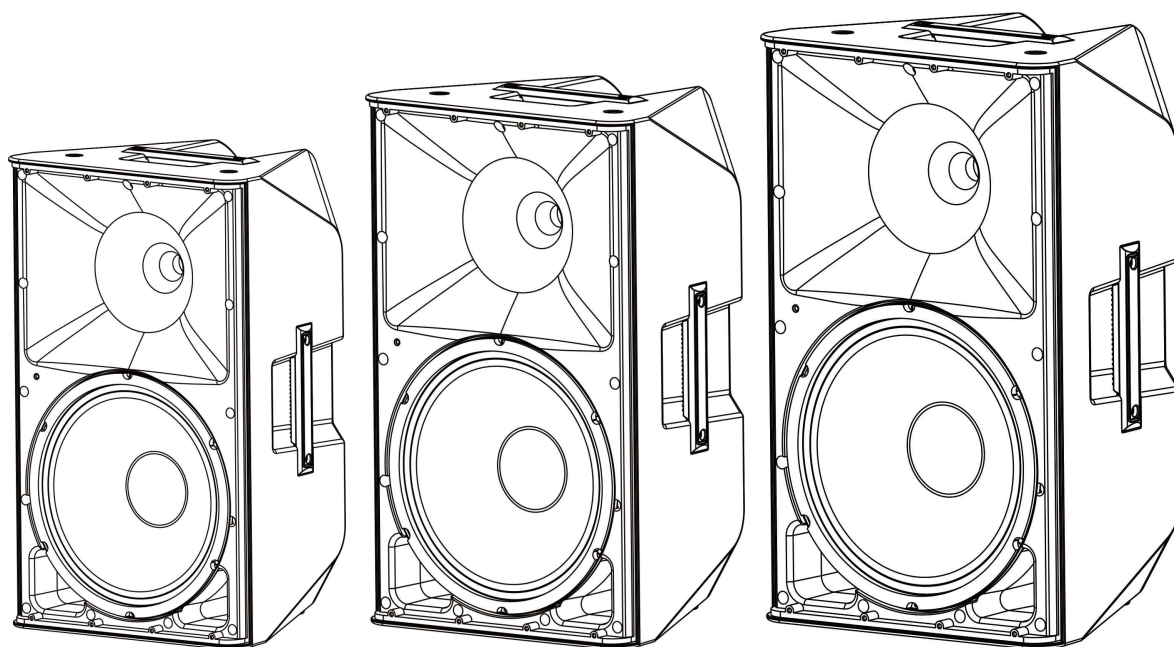
**APOLLO 12A**

**APOLLO 15A**

**APOLLO 10**

**APOLLO 12**

**APOLLO 15**



# SAFETY INTRODUCTION

1. Please read the manual carefully and keep it for future reference.
2. All safety instructions and warnings must be adhered to. They are part of the manual and must be kept with the manual.
3. Any guarantee claims are rendered invalid if damage occurs due to non-observance of these operating instructions. We assume no liability for any consequent damage.
4. We assume no liability for personal injury or damage to property caused by incorrect handling or non-observance of the safety instructions. Any guarantee claims expire in such cases.
5. Unauthorized conversions and/or modifications of the appliance are not permitted for safety and licensing reasons (CE).
6. The appliance is approved for operation in dry, closed rooms only. Do not operate the device nearby water, such as in bathrooms or nearby swimming pools.
7. The appliance may not be exposed to extreme temperatures ( $< +5^{\circ}\text{C}$  /  $> +35^{\circ}\text{C}$ ) in operation.
8. The appliance may not be subjected to strong vibrations or heavy mechanical strain.
9. The appliance may not be exposed to excessive moisture (due to dripping or sprayed water, for example).
10. Do not place any recipients filled with liquids, such as glasses or vases, on top of or directly next to the appliance. They could fall over, causing water to enter the appliance. Never pour out liquids above the appliance. Do not place any small objects, such as coins or paper clips, on the appliance since they could fall inside the appliance. You run a high risk of causing a fire or life-threatening electrocution! If any liquid or objects enter the appliance nevertheless, pull the mains plug out of the socket immediately and contact a specialist.
11. The appliance has been constructed according to protection class I. The power plug must only be plugged into a protection class I outlet. The voltage and frequency must exactly be the same as stated on the device. Wrong voltages or power outlets can lead to the destruction of the device and to lethal electrical shock.
12. 110- 240 Vac, 50/60 Hz mains socket may be used as source of power for the appliance. Never try to operate the appliance with any other voltage.
13. Only pull the mains plug out of the socket by the intended gripping surface. Do not pull it by the cable.
14. Never plug the mains plug in or out with damp or wet hands.
15. Always pull the mains plug out of the mains socket:
16. Before cleaning the appliance
17. If there is a thunderstorm
18. If you will not be using the appliance for a long period of time ( $> 1$  week)

19. Electrical appliances must be kept out of the reach of children. Be particularly careful if children are present. Children are not aware of the hazards involved in handling electrical appliances improperly. Children could attempt to poke objects into the appliance. There is a life-threatening danger of electrocution.

20. Do not leave the appliance unattended while operating it.

21. Never place the appliance on an unstable or movable surface. Persons could be injured or the appliance damaged by it falling down.

22. When using a rack, make sure it is in a stable position and is transported securely. Installation on uneven, slanted surfaces or stopping the rack abruptly during transport can result in the rack overturning or appliances falling from or out of the rack and injuring people.

23. Live components can be exposed by opening covers or removing components (unless this can be done without tools). Contact points can also be live. If the appliance has to be opened in order to calibrate, service, repair or replace components or assemblies, all of its poles must be disconnected from all sources of voltage first. If the appliance has to be kept open and under voltage during maintenance or repairs, this work may only be carried out by a specialist who is familiar with the risks involved and the relevant regulations.

24. Never connect the appliance directly after transferring it from a cold to a warm room. The condensation water that forms could destroy the appliance or result in an electric shock. Allow the device to reach room temperature before connecting it. Wait until the condensation water has evaporated. This can take some hours.

25. Do not place any naked flames such as those of burning candles on or next to the appliance.

26. Do not place the appliance on soft surfaces such as carpets or beds. Do not cover the air vents of the appliance. Do not obstruct the air circulation with objects such as magazines, table cloths or curtains. This prevents the dissipation of heat from the appliance and can result in overheating.

27. Only use the appliance in a moderate climate, not in tropical environments.

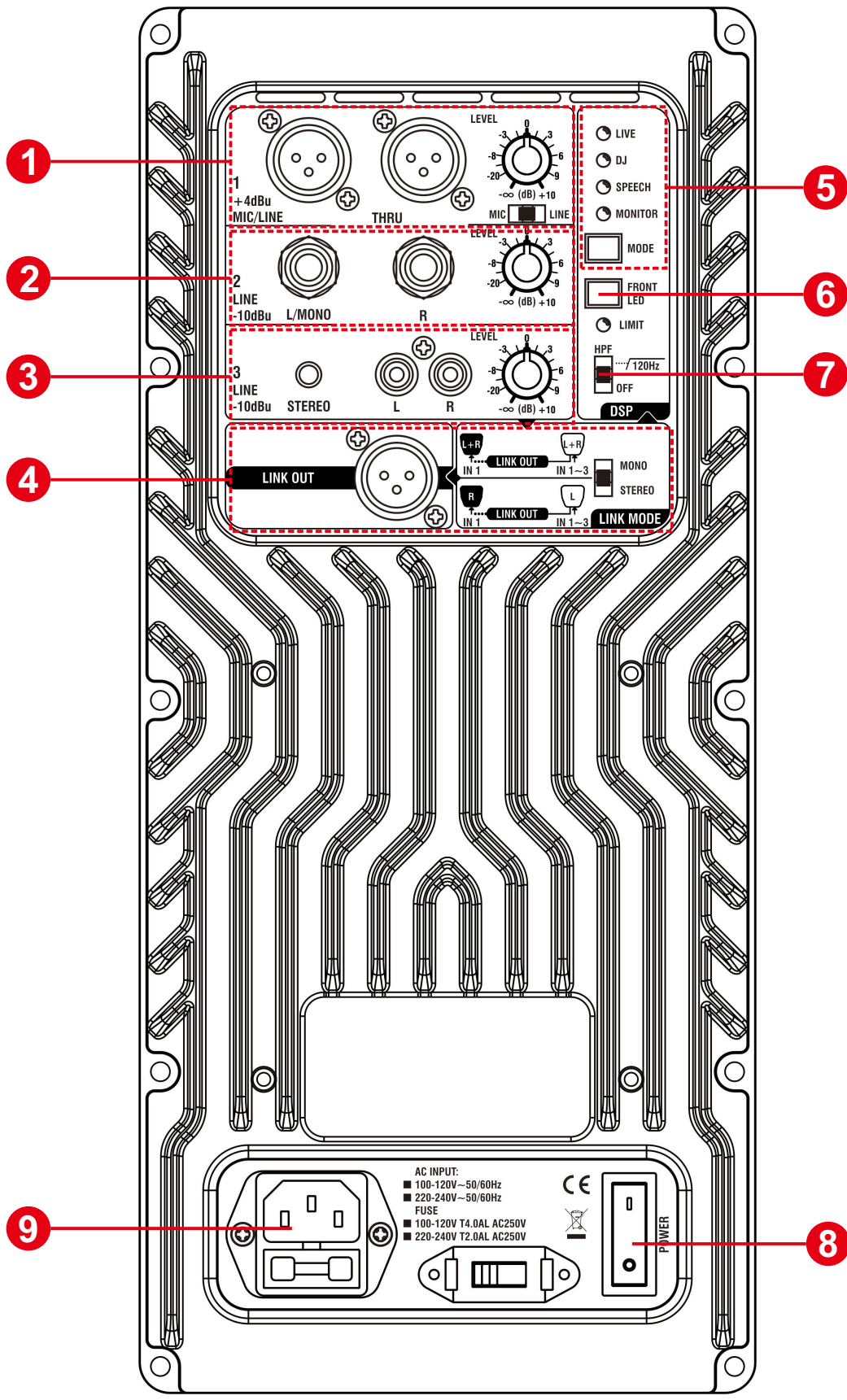
28. All persons involved in operating, installing and servicing the appliance and putting it into service must be trained and qualified accordingly and observe these operating instructions.

29. Defective mains cables may only be replaced by specialists. Danger of shock hazard!

30. Do not leave the packaging material lying around carelessly since it can become a source of danger for children playing with it.

31. The accident prevention regulations and the regulations of the employers' liability insurance association should be observed at commercial institutions.

32. If you are not sure about the correct connection or if questions arise which are not answered by the operating instructions, please do not hesitate to contact support or a specialist of your choice. Consult a specialist if you are in doubt about the operating principle or the safety of the product.



**1.[MIC/LINE 1 INPUT PANEL SECTION]**-In this panel section there is a connector (female XLR-type) that accept balanced MIC or LINE level signals. By using LINE/MIC switch it is possible to adapt the gain to microphone or line level signal; The LEVEL knob allows to adjust the input signal level. The THRU connector (male XLR-type) produce exactly the same signal that arrive in the input . Use it to daisy-chain several M36PS speakers.

**NOTE: Please notice that the input connector do not supply +48V Phantom Power, so you can use condenser microphones only if self-powered**

**2.[LINE 2 INPUT PANEL SECTION]**-This section includes 2 Jack 1/4” inputs (L/MONO, R) to connect musical instruments, Mixer etc. The input audio signal can be adjusted by using the relative knob

**3.[LINE 3 INPUT PANEL SECTION]**-This panel section includes:

- 1.One 1/8” Mini-jack plug that can be used to connect mobile phones, tablets, computers, etc.
- 2.Two unbalanced inputs for RCA pin jacks that can be used to connect any external stereo device such as Mp3 Player, CD player, Mixer, Etc.
- 3.One knob to adjust the input audio signal.

**Note: The Mini-Jack and RCA stereo inputs can not be used at the same time.**

**4.[LINK OUT PANEL SECTION]**-From the XLR “LINK OUT” audio signals are sent (routed from each INPUT) to a connected M36PS loudspeaker. The LINK OUT output must be connected to the INPUT 1 (XLR) of the APOLLO loudspeaker. The audio signals coming out of the LINK OUT jack are line level and therefore it is necessary to set the MIC / LINE switch to the LINE position on the connected APOLLO AX loudspeaker.

The “LINK OUT MODE” switch enables you to select whether the mixed signal (on the original APOLLO) will be played in stereo or monaural on the original and linked APOLLO.

The following signals are mixed and output according to the switch setting.

LINK MODE Switch	STEREO			MONO		
	INPUT1	INPUT2/3		INPUT1	INPUT2/3	
L		R	L		R	
Input of the original APOLLO						
Output of the original APOLLO	✓	✓	-		✓	
Output of the linked APOLLO	✓	-	✓		✓	

**5.[DSP PRESETS PANEL SECTION]**-In this panel section it is possible to change the speaker response adjusting the timbre to the relevant applications. By pressing the PRESET switch, it is possible to scroll the following modes:

- 1.**LIVE:** The ideal preset for most “live” application.
- 2.**DJ:** Recommended for installations in discos and clubs.
- 3.**SPEECH:** The speaker allows the best speech intelligibility.
- 4.**MONITOR:** The speaker becomes specially suited for use as “stage monitor”.

The selected mode will be indicated by the relative LED

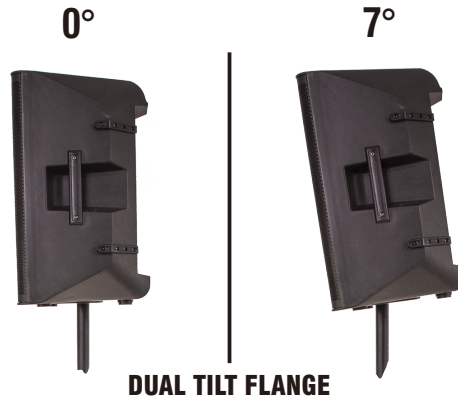
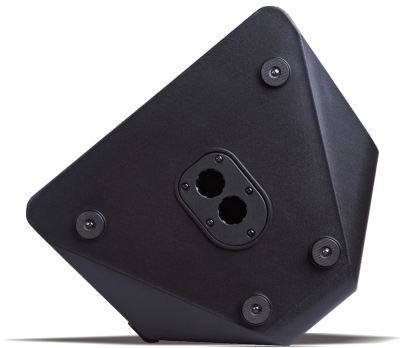
**6.[FRONT LED SWITCH]**-This switch allows to turn ON/OFF the Blue front LED.

**7.[HPF Switch]**-This switch allows to select the cutoff frequency of the high pass filter. Placing this switch on [120Hz] will cut the low frequency components below the threshold. If the unit is used independently, the switch must remain in position [OFF]. If you intend to use the unit in combination with a sub-woofer, we recommend that you set this switch to [120Hz].

**8.[POWER SWITCH]**-Switch up to turn the speaker on, and switch down to turn it off. Make sure the level control is down before you turn it on.

**9.[IEC Socket with Fuse holder]**-Plug the line cord into an AC socket properly configured for your particular model. In case of fuse burn, to prevent the risk of fire and damaging the unit, Before replacing the fuse, make sure the unit turned off and disconnected from the AC outlet.

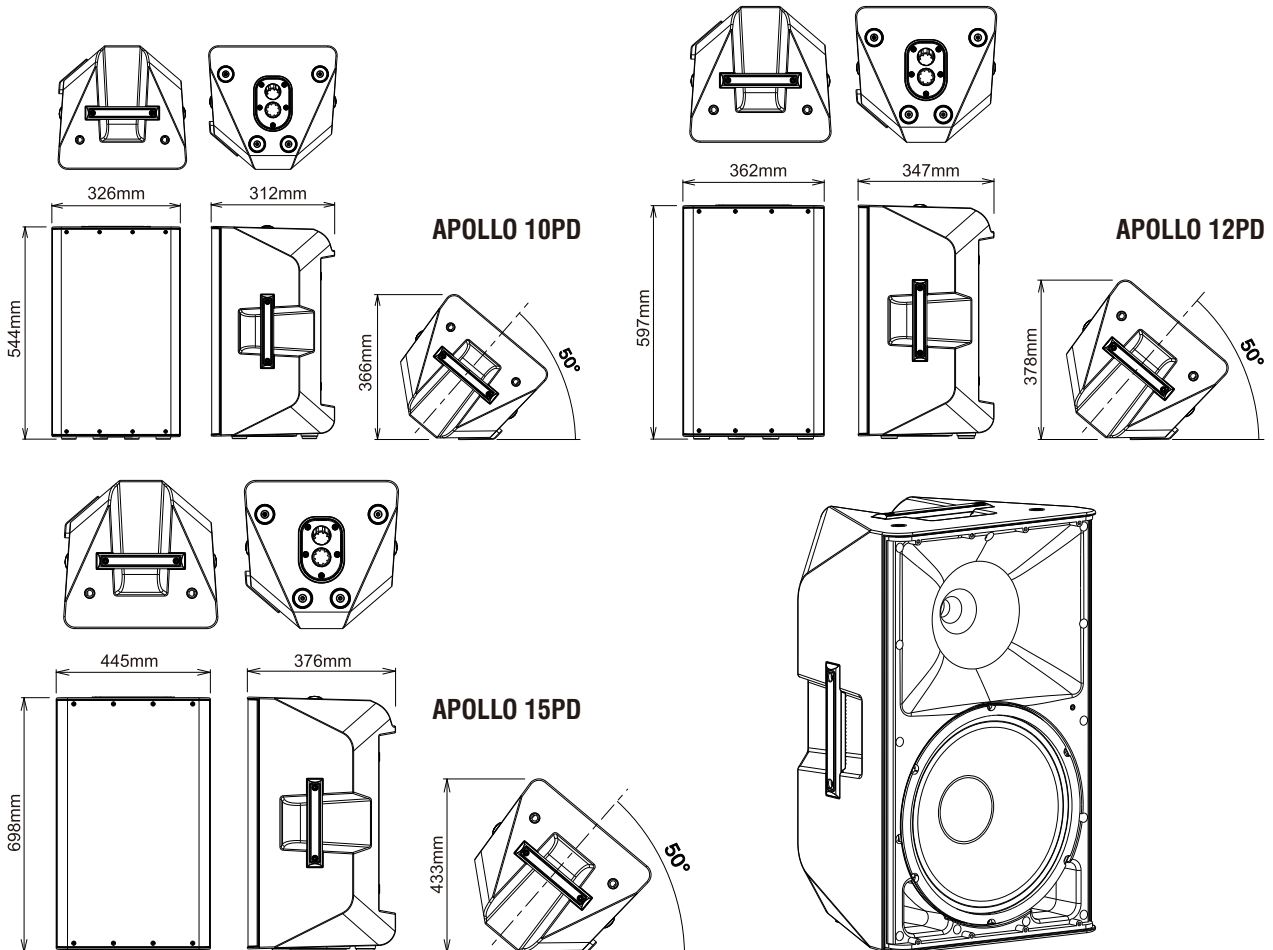
# STAND FLANGE



**DUAL TILT FLANGE**

The speakers have a stand flange with a 0° angle socket (rear position) and a socket with a 7° tilt angle (front position). Examples of use: Use the socket with a 0° angle for standing audiences and the socket with a 7° tilt angle for seated audiences.

## Dimensions-APOLLO Powered



# TECHNICAL SPECIFICATIONS

## APOLLO-ACTIVE SERIES

Model:	APOLLO 10A	APOLLO 12A	APOLLO 15A
Type:	2-Way bi-amp powered speaker bass reflex type		
Frequency response:	55Hz-19kHz	50Hz-19kHz	45Hz-19kHz
Power output(RMS/peak):	350W/700W	400W/800W	450W/900W
Amplifier Type	Class D + Class AB	Class D + Class AB	Class D + Class AB
Coverage Angle	H90° x V60° constant directivity horn		
Max.SPL (Peak)	132dB	134dB	136dB
LF transducer	10" Woofer 2" Voice coil	12" Woofer 2.36" Voice coil	15"Woofer 3" Voice coil
HF transducer	1" Exit-1.35" Compression Driver		
Crossover frequency	2.8kHz	2.8kHz	2.5kHz
Handles	1 x top, 2 x side		
Material,finish,color	PP, matt black		
Pole Socket	35mm With 2-way feature (0°-7°)		
Connectors Input	Input 1: 1 x XLR, Input 2: 2 x Jack, Input 3: 1 x RCA, 1 x 3.5mm Jack		
Connectors Output	THRU: 1 x XLR, LINK OUT: 1 x XLR		
Dimensions(WxHxD):	387 x 615 x 370 mm	420 x 665 x 410 mm	505 x 765 x 440 mm
Weight:	13kg	16kg	21kg

## APOLLO-PASSIVE SERIES

Model:	APOLLO 10	APOLLO 12	APOLLO 15
Type:	2-Way Passive speaker		
Frequency response:	55Hz-19kHz	50Hz-19kHz	45Hz-19kHz
Power output(RMS/peak):	400W/800W	450W/900W	500W/1000W
Coverage Angle	H90° x V60° constant directivity horn		
Max.SPL (Peak)	132dB	134dB	136dB
LF transducer	10"Woofer 2"Voice coil	12"Woofer 2.36"Voice coil	15"Woofer 3"Voice coil
HF transducer	1" Exit-1.35" Compression Driver		
Crossover frequency	3.2kHz	2.8kHz	2.5kHz
Handles	1 x top, 2 x side		
Material,finish,color	PP, matt black		
Pole Socket	35mm With 2-way feature (0°-7°)		
Connectors	Lockable NL4 mounting connector		
Dimensions(WxHxD):	387 x 615 x 370 mm	420 x 665 x 410 mm	505 x 765 x 440 mm
Weight:	11kg	14kg	19kg

