



JAM BUDDY | User Manual

JAM BUDDY

用户使用说明



感谢您购买我们的产品!

产品概述

JAM BUDDY是一款针对吉他手设计的便携式落地音箱，它结合了吉他音箱和蓝牙音乐播放功能，内置一块锂电池，为吉他手提供了室外或小型聚会演奏的便利性。您可以使用蓝牙播放伴奏，选择您喜欢的音色进行演奏。

JAM BUDDY采用双通道设计，每个通道提供独立的增益调节，音色包括清音、过载和失真，并且有可独立调节效果深度、时值和反馈时间的延时效果器，通过双踏板控制切换音色，为您的演奏带来了更多便利性和乐趣。

JAM BUDDY不仅拥有丰富的吉他音色效果、方便的蓝牙播放功能，而且体型小巧的特点更方便您随时随地携带在身边练习吉他，进行你个人的JAM TIME!



更多产品信息，请关注官方微信

-01-

重要的安全说明



注意：机内无用户可用备件！为了防止触电,切勿自行拆开机盖！必要时需由专业人士维修！

警告：为防止发生火灾或触电危险,本机切勿受雨淋或受潮！



等边三角形中自带的闪电型箭头,该符号用来告诫用户---机内具有危险电压的非绝缘部分,易造成电击的危险。



等边三角形中自带的感叹号,该符号用来提醒用户---机器附件中有重要的操作和保养说明,请查阅使用说明书。



该符号警告用户---禁止推移在最顶端装放有机器而又无保护措施的可移动机架,谨防最顶端的机器跌落给您带来不必要的人身伤害。为保护您的利益,请使用由该制造厂商所生产或推荐的可移动机架、三角架、脚架、固定架、控制台等配件。



严重警告 无论本机是在充电或是连接电源适配器使用时,机器正处于与电网电源连接的状态,为防止发生火灾或触电危险,切勿自行拆开机盖进行触碰和维修!

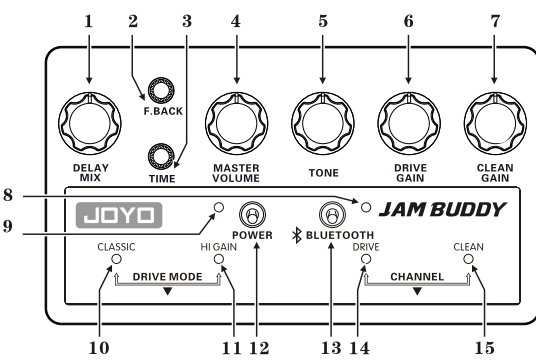
-02-

详细的安全说明

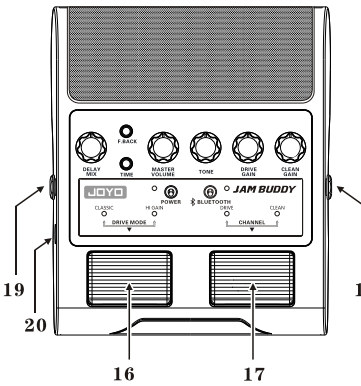
- 为了您的安全和能更快地熟练使用本产品,使用前请先详细阅读并理解本书中所有的安全与使用说明。
- 为了您以后能更加方便地使用和保养本产品,请妥善保管好本使用说明书以供必要时查阅。
- 为了您能更加安全地使用本产品,请遵守在设备上和说明书中所有的警告与注意事项。
- 只使用本机提供的电源适配器: 本产品附带之电源适配器经过严格的测试并已通过安规认证,更换其他品牌电源适配器可能导致本产品噪声增大,或损坏内部电路,或造成内置电池寿命缩短。
- 请勿将本机放在靠近水或潮湿的地方使用,如浴缸、厕所、洗衣桶、厨房洗菜盆、游泳池旁,防止液体渗入机内,导致机器发生故障无法正常工作或者发生用电危险。
- 避免在周围充满易燃易爆气体的地方使用,如加油站或粉尘场所。
- 如遇本机内置锂电池损坏,请勿擅自采购并更换; 本机内置电池已通过严格的安规测试,擅自更换其他途径获得的电池可能会因其自身质量问题导致本产品无法正常工作,或发生爆炸引起火灾。请联系您的零售商更换电池。
- 请勿用酒精等化学溶剂物品清洁本机器,避免造成机器表面的损伤,有清洁必要时可用干抹布擦拭。
- 无论出于哪种原因,请勿自行拆开机壳,如遇产品故障请联系专业维修人员,或联系您的零售商进行维修。
- 请不要强行拉扯电源线以及其他机器组件,避免电源线以及插头损坏。
- 若是在打雷或闪电时,较长时间不使用本机器,务必关闭本机电源开关并拔出电源插头。
- 请勿碰撞、抛掷、振动本机,以免损坏本机。
- 如果设备长期闲置不用,应确保电池处于充满状态,每隔两个月复充一次电,否则电池将老化。
- 如本机提示电量低,请及时为本机充电,过度放电以及内部电池长期低电会导致不可逆的电池容量损失,导致电池损坏。

-03-

面板说明



- 1.延时效果器干湿比调节旋钮；
- 2.延时效果器反馈量调节旋钮；
- 3.延时效果器延时时间调节旋钮；
- 4.总输出音量调节旋钮；
- 5.音色明亮度调节旋钮；
- 6.过载通道增益调节旋钮；
- 7.清音通道增益调节旋钮；
- 8.蓝牙指示灯：当JAM BUDDY的蓝牙功能被打开时，蓝牙指示灯点亮为蓝色灯。
- 9.电源/电池电量指示灯：开启JAM BUDDY后，电源指示灯点亮为蓝色灯,当电池电量不足时,指示灯将开始持续闪烁并保持5分钟左右，5分钟后JAM BUDDY将自动关机。



- 10.经典过载模式指示灯：当经典过载模式被选中时,该指示灯亮起。
- 11.高增益模式指示灯：当高增益模式被选中时,该指示灯亮起。
- 12.电源开关：开启/关闭JAM BUDDY设备的电源。
- 13.蓝牙开关：开启/关闭JAM BUDDY的蓝牙功能。
- 14.过载通道指示灯；
- 15.清音通道指示灯；
- 16.过载通道模式选择踏板；
- 17.通道切换踏板；
- 18.吉他输入插口；
- 19.耳机输出插口(注意，耳机接入后，本机的喇叭输出将自动被切断)。
- 20.电源接口：连接电源适配器的接口。

-04-

基本操作说明

① 将吉他与JAM BUDDY连接

② 打开电源开关

③ 电源指示灯、清音通道指示灯与经典过载模式指示灯同时亮起(提示：本机开机默认状态为清音通道)

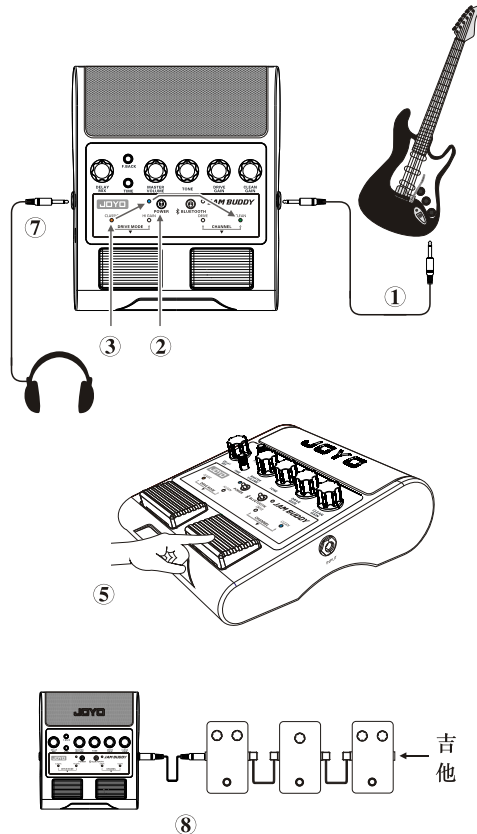
④ ROCK NOW! 您可根据您的演奏需求调节TONE、DRIVE GAIN、CLEAN GAIN，并调整MASTER VOLUME旋钮来获得合适的吉他音量。

⑤ 您可通过操作通道选择踏板来选择您需要的音色通道。当指定的通道被选择时，对应的通道指示灯将点亮。

⑥ 您还可以通过操作过载通道模式选择踏板来调整DRIVE通道，使其工作在CLASSIC模式或者HI GAIN模式。当指定的模式被选择时，对应的模式指示灯会亮起。

⑦ JAM BUDDY为您提供了监听耳机输出接口，您可以通过此接口连接耳机，这样您就可以安静的练习或欣赏音乐，并且不会打扰到其他人。

⑧ JAM BUDDY是一只标准的吉他音箱，您可以像使用普通吉他音箱一样，在JAM BUDDY前串入效果器（注意：如果您正在使用JAM BUDDY的DRIVE通道，请尽量避免在JAM BUDDY前串接高增益失真效果器，这样可能会引起自激啸叫。）



-05-

蓝牙连接

JAM BUDDY内建有蓝牙通信单元，您可以使用带有蓝牙功能的设备与JAM BUDDY进行连接并播放音乐。要使用本功能，您可以按照下面的方式来操作您的JAM BUDDY。

① 打开JAM BUDDY蓝牙开关，蓝牙指示灯点亮为蓝色并持续闪烁；

② 打开移动设备的蓝牙功能，在设备列表中找到“JAM BUDDY”，并进行配对。成功配对后，JAM BUDDY的蓝牙指示灯将保持常亮状态。



充电

在使用JAM BUDDY过程中，如果电源指示灯变成蓝色灯闪烁时，则表示您需要给JAM BUDDY充电了。为了不损伤内置电池，请不要长期让本机处于低电状态工作。如不使用，请将电池充满存放。

具体请参阅本说明书“安全说明”章节

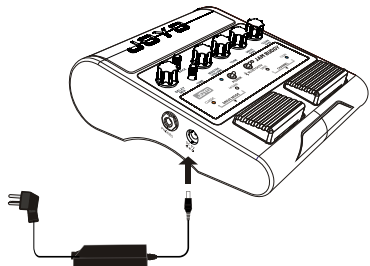
① 将电源适配器接进JAM BUDDY电源接口进行充电；

② 为JAM BUDDY充电时，充电指示灯点亮为红色灯；

③ 当JAM BUDDY充满电后充电指示灯熄灭；

⚠ 注意事项：请使用本产品配备的电源适配器进行充电。

温馨提示：如果电池已经充满电，但电池使用时间不足1小时，说明电池已经老化，您需要更换新电池再使用。



-06-

电气参数

AC适配器输入电压：AC100~240V 50~60Hz
AC适配器输出电压：DC 9V/3A
内置电池规格：7.4V/2200mAh(锂电池)
吉他通道输入灵敏度：-6.7dBV
RMS功率：8W（4W+4W）
效果器-吉他通道：DELAY(最大500ms)
重量:680g
体积:156（长）X183（宽）X75（高）mm

包装清单

主机x1
电源适配器x1
电源线x1
说明书x1



深圳市卓乐科技有限公司
公司地址：深圳市宝安28区陆氏大厦2楼 邮编:518133
WWW.JOYCHINA.CN
传 真: 0755-29765389 国内销售热线: 0755-29765116
售后服务邮箱: ele@joychina.cn 售后服务热线: 0755-29765393

-07-

Thank you for purchasing JAM BUDDY!

It took Joyo's engineers two years to develop this patented new product: the JAM BUDDY Dual channel 2x4W pedal guitar amp.

Combining guitar playback with its reduced high frequency range due to the sound of 12 inch speakers and also full range normal music playback is a difficult task. Some products on the market have already dealt with this issue and they are nice practice boxes that are controlled by hand on a table top. But this is not how guitar players operate their gear, we need our hands free and we stick our gear with our feet. JAM BUDDY combines both aspects, it is a floor based dual channel amp simulator that can be switched with your feet and also accepts a BLUETOOTH signal to play back your favorite backing tracks and songs you want to jam along to.

JAM BUDDY has a rechargeable battery, a built in delay and it accepts pedals in front of it really well. Everything you need to practice and have a great time doing it!

Important safety instructions



CAUTION: TO REDUCE THE RISK OF ELECTRIC SHOCK, DO NOT REMOVE COVER (OR BACK). NO USER-SERVICEABLE PARTS INSIDE. REFER SERVICING TO QUALIFIED SERVICE PERSONNEL.

WARNING: TO REDUCE THE RISK OF FIRE OR ELECTRIC SHOCK, DO NOT EXPOSE THIS APPARATUS TO RAIN OR MOISTURE.



The lightning flash with arrowhead symbol within an equilateral triangle is intended to alert the user to the presence of uninsulated "dangerous voltage" within the product's enclosure that may be of sufficient magnitude to constitute a risk of electric shock to persons.



The exclamation point within an equilateral triangle is intended to alert the user to the presence of important operating and maintenance (servicing) instructions in the literature accompanying the product.



This symbol is intended to alert the user--- Use only with the cart, stand, tripod, bracket, or table specified by the manufacturer, or sold with the apparatus. When a cart is used, use caution when moving the cart/apparatus combination to avoid injury from tip-over.



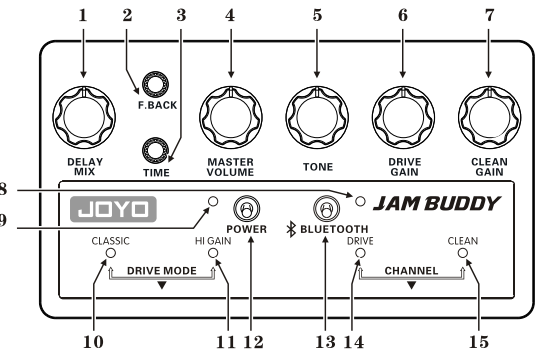
WARNING: When the product is being charged or connected with power adapter, don't remove its cover (or back), touch the parts and repair it by yourself!

TO REDUCE THE RISK OF FIRE OR ELECTRIC SHOCK, DO NOT EXPOSE THIS APPARATUS TO RAIN OR MOISTURE!

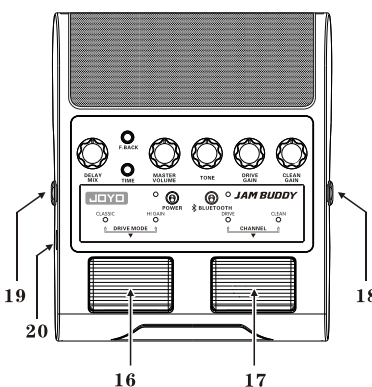
Detailed safety instructions

- Use the attached power adapter only. It has passed strict tests and has safety certificates. If use other power adapters, it will increase noise, damage the internal circuits or the built-in battery.
- Do not expose it to any damp areas such as bathtub, toilet, washing-tub, sink, swimming pool. Avoid spill liquid substance into the product, otherwise it will lead to malfunction or electric shock.
- Don't use this product in places where is full of flammable and explosive gas, such as gas station or dusty areas.
- If the built-in battery is broken, don't buy a new one and change it by yourself, it might cause malfunction, explosion or fire due to inferior quality, as the built-in battery has passed strict tests and has safety certificates, please contact your retailer for battery replacement.
- Do not use alcohol or other cleaning fluids to clean this product, otherwise it will damage the surface, use a clean dry cloth when necessary.
- Do not open the case for any reason, please contact professional maintenance men if it malfunctions, or contact your local retailer for maintenance.
- Do not pull the power cord or other parts of this product, so as not to damage the power cord and plugs.
- Please turn off this product and unplug it during a thunderstorm, lightning or not in use for a long time.
- Do not collide, throw or vibrate this equipment.
- To protect the built-in battery, please have a full charge if it is not in use for a long time and ensure charge it for every 2 months.
- If it indicates low battery, please charge it in time, as over discharge and low battery will cause irreversible loss to the battery capacity, and damage the battery.

Panel



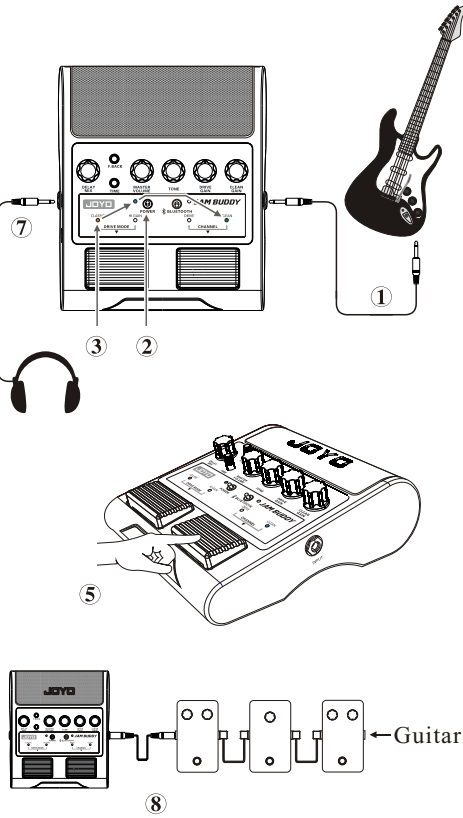
1. Mix level control knob of Delay effect
2. Feedback control knob of Delay effect
3. Delay Time control knob of Delay effect
4. Master volume knob
5. Tone control knob
6. Gain control knob for Drive channel
7. Gain control knob for Clean channel
8. Bluetooth Status indicator: When JAM BUDDY's Bluetooth function is switched on, the Bluetooth indicator is blue.
9. Power Indicator: This power indicator turns on with a color of blue when Jam Buddy is powered, and gets into a blinking state that lasts for about 5 minutes, if the internal battery is low, after 5 minutes, the Jam Buddy will turn off automatically.



10. Classic overdrive mode indicator: when the classic overdrive mode is chosen, then this indicator is on.
11. Higan mode indicator: when the Higan mode is chosen, then this indicator is on.
12. Power switch: turn on/off JAM BUDDY.
13. Bluetooth switch: turn on/off JAM BUDDY's Bluetooth function
14. Overdrive channel indicator
15. Clean channel indicator
16. Mode select footswitch for overdrive channel.
17. Footswitch for switching channels between Overdrive and Clean.
18. Guitar input jack
19. Headphone output jack (Important notes: when the headphone is connected, this product's peaker output will be cut off automatically.)
20. Power Interface: connects to power adapter .

Instructions

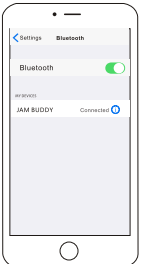
1. Connect your guitar to JAM BUDDY
2. Turn on the power switch
3. And then the power indicator, clean channel indicator and classic overdrive indicator will be on at the same time. (Important notes: JAM BUDDY's default setting is clean channel)
4. ROCK NOW! You can adjust the knobs of TONE, DRIVE GAIN, CLEAN GAIN according to your requirements, and obtain appropriate guitar volume by adjusting the MASTER VOLUME knob.
5. You can choose your favorite tone channel by switching the channel switching footswitch. When the specific channel is chosen, the channel indicator will be on.
6. You can also adjust the DRIVE channel mode by operating the overdrive channel model selection footswitch, ensuring it works in CLASSIC or HIGAIN modes. When the specific model is chosen, the model indicator will be on.
7. JAM BUDDY features monitor headphone output jack that can be connected with headphones, therefore you can practice quietly or listen to music without disturbing other people.
8. JAM BUDDY is a standard guitar amp, which accepts pedals in front of it (Important notes: If you are using JAM BUDDY's Drive channel, please don't connect with high gain distortion pedals in the front, as it might cause feedback noise.) JAM BUDDY is truly a guitar amp, which accepts pedals in front of it (Important notes: If you are using JAM BUDDY's Drive channel, please don't connect with high gain distortion pedals in the front, as it might cause self-oscillation noise.)



Bluetooth connection

JAM BUDDY has a built-in Bluetooth communication unit, so you can connect it to devices with a Bluetooth function for playing music. For detailed information, please refer to the instructions as below:

1. Set the Bluetooth slide switch to "ON". When the Bluetooth switch is on, the Bluetooth indicator is blue and flashes continuously.
2. Turn on the Bluetooth of the mobile device. Find "JAM BUDDY" from the device list and match. When Bluetooth connects to JAM BUDDY, then the Bluetooth indicator is on.



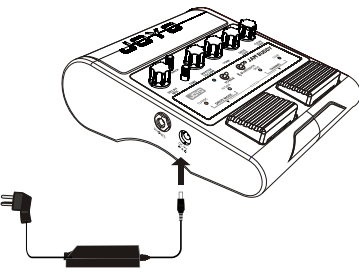
Charge

During use, if JAM BUDDY's power indicator becomes blue and keeps flashing, then it needs to be charged immediately. Don't keep this machine in low-battery condition for a long time, please charge the battery fully when not in use.

For detailed information, please refer to the "Safety Instructions".

1. Connect the power adapter to the power interface to charge JAM BUDDY
2. The power indicator is red when it is being charged.
3. When it is fully charged, the power indicator will be off.

Important notes: please use the attached power adapter to charge. If the battery is fully charged and cannot be used for an hour, change a new battery.



Specifications

- AC adapter input voltage: AC100-240V 50-60Hz
- AC adapter output voltage: DC 9V/3A
- Built-in battery: 7.4V/2200mAh (lithium battery)
- Guitar channel input sensitivity: -6.7dBV
- RMS power: 8W (4W+4W)
- Pedal-guitar channel: DELAY (500ms at Maximum)
- Weight: 680g
- Volume: 156 (Length) X 183 (Width) X 75 (Height) mm

Package content:

- JAM BUDDY x 1
- Power adapter x 1
- Power cord x 1
- User manual x 1



JOYO TECHNOLOGY CO., LTD

Address: 2/F, Lushi Industry Building, 28th District, Bao'an, Shenzhen, 518101 China.
www.joyoaudio.com Email: info@joyoaudio.com Tel: 0086-755-29765381