

SWAMP A3

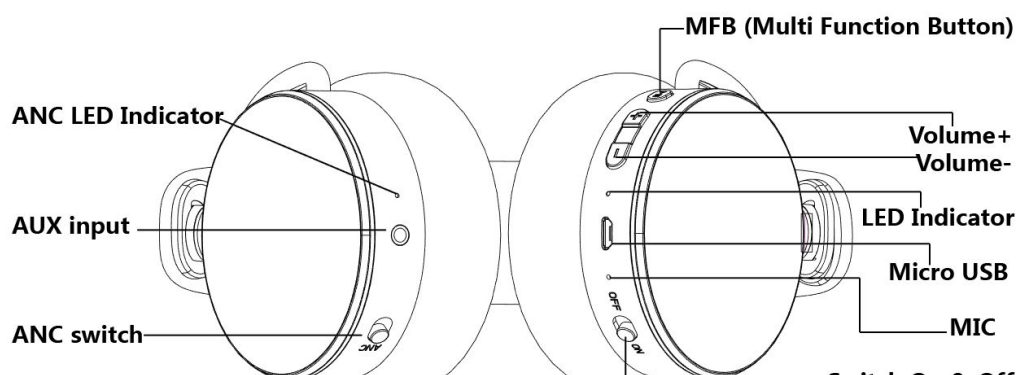
ANC Bluetooth Headphone

User Manual

Contents:

1. Product Overview	2
2. Basic Operation	3
3. Bluetooth Pairing and Connection	4
4. Connection with Two devices	5
5. LED Indicator	6
6. Charging	7
7. AUX Wired Connection	8
8. ANC Function	9
9. Product Specification	10
10. Attentions and Q & A	11

Product Overview:



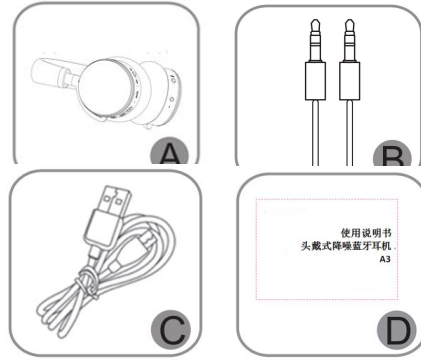
Package Contents :

Bluetooth headphone x 1

3.5mm audio cable x 1

Micro charging cable x 1

User manual x 10



2. Basic Operation:

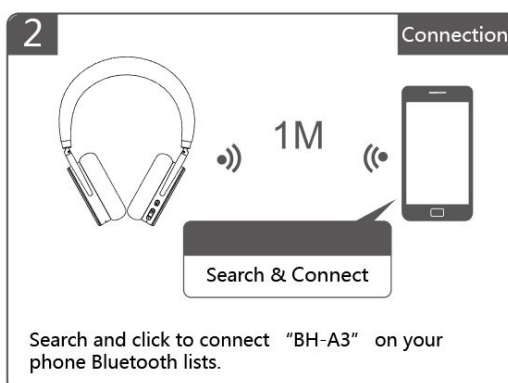
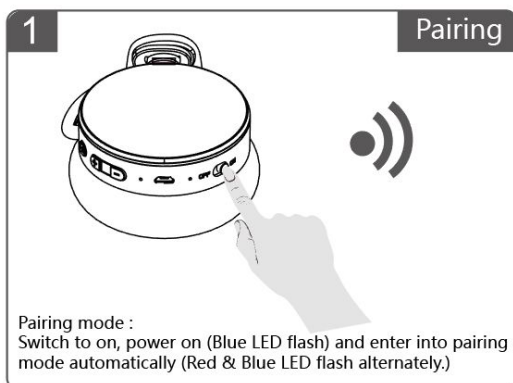
Button	Function	Operation Instruction
MFB	Play / Pause	Short press (when play music)
	Redial a call	Double press Doubl
	Voice dialing	Long press for 1 second
	Answer a call	Short press (when call coming)
	Hang up a call	Short press (during a call)
	Reject a call	Long press one second (when call coming)

	Microphone mute	Double press to mute the microphone. Press again to cancel microphone mute (during a call)
Switch On & Off	Power on	Switch to On , power on and enters into pairing mode automatically with Red & Blue LED flash alternately Remarks: Headphone will research& reconnect with the paired device when power on. *如有配对记录, 每次开机将会尝试回连曾经连接过的设备
	Power off	Switch to Off, LED turn off
Volume +	Volume up	Short press(when playing music or calling)
	Next song	Long press (when playing music)
Volume -	Volume down	Short press(when playing music or calling)
	Previous song	Long press (when playing music)
ANC switch	ANC on	Switch to ANC (When off / Bluetooth / AUX mode)
	ANC off	Switch to another side (When off/ Bluetooth / AUX mode)

3. Bluetooth Pairing and Connection:

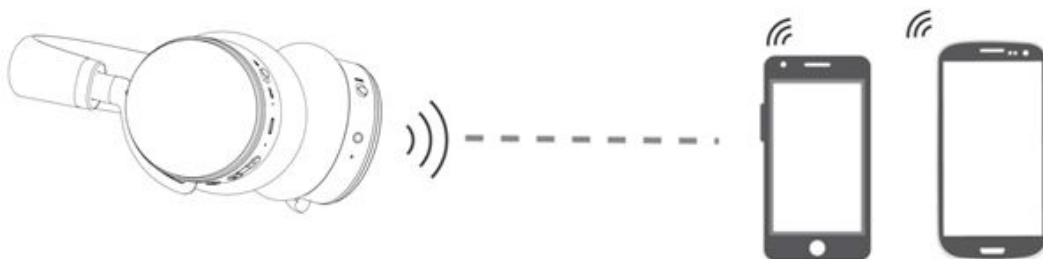
A. Switch to “ON”, A3 power on and enter into pairing mode automatically with Red & Blue LED flash alternately.

B. Search and click to connect “A3” on your phone Bluetooth lists, LED change to Blue LED low flash after connected. Play music from phone to headphone.



4. Connection with Two devices:

- A. Follow part 3 to connect with first phone, and turn off the Bluetooth function of phone.
- B. Power off A3, power on again to enter into pairing mode automatically with Red & Blue LED flash alternately.
- C. Search and click to connect “A3” on second phone Bluetooth lists, LED change to Blue LED low flash after connected.
- D. Turn on Bluetooth function of first phone, click to reconnect “A3” on Bluetooth lists. Headphone connected with two phones.



Notes:

Only could play music or answer call from one phone, need to stop one to play another.

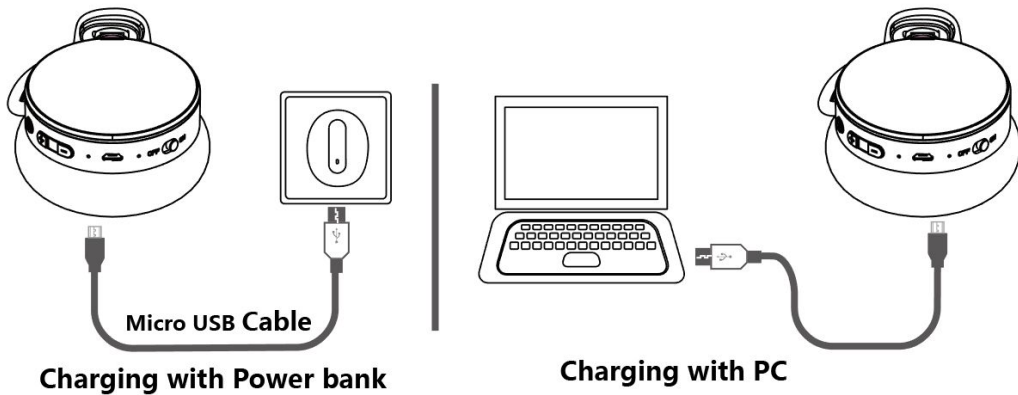
5. LED Indicator

Mode	LED Indicator
Power on	Blue LED flashes twice
Power off	Red LED turn off
Pairing mode	Red & Blue LED flashes alternately
Connected standby / play music / call mode	Blue LED flashes once every 10 seconds
Delete paired record	Blue and Red LED flashes once at the same time
Charging	Solid Red LED
Full charged	Solid Blue LED
Low battery	Red LED flash
ANC On	Solid Green LED
ANC Off	Green LED turn off

6. Charging

Please charge the A3 at once, when the Red LED flash. Charging time about 2 hours. Solid Red LED change to solid Blue LED when full charged.

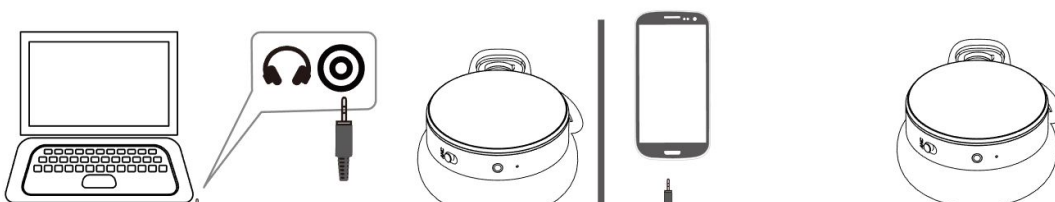
Plug one end of micro USB cable to A3, another end to USB charger (Car charger, power bank or PC etc)



1. Please charge the item at least once for every 2 months when without use.
2. Charging when the item power on, it will reset automatically and power off.

AUX Wired connection :

Plug one end of 3.5mm cable to the audio interface of headphone, another end connect to phone or PC audio port.



Notes:

The buttons of headphone are invalid when AUX mode.

AUX function could be work when battery out of power or item power off.

Bluetooth function will power off when plug AUX cable in (On mode).

ANC Function

ANC Function could be use at power off / Bluetooth / AUX mode, it could reduce the noise heard from around (such as airplane, train etc.) Switch to ANC to power

on the function with solid Green LED. Or enjoy the excellent music with power off

the ANC function (Green LED turns off.)

Notes:

Pls power off the ANC function when walking on the road to keep yourself in safe.

Pls pay attention to your airplane or train messages when you use ANC function on the airplane or train station.

Enjoy the excellent voice of the phone when without ANC function.

Pls turn off the ANC function to save power when without use.

Product Specification:

Bluetooth Version	V4.2
Bluetooth Chipset	CSRA64215
Operation Range	10 meters
Bluetooth Protocols	HSP,HFP,AVRCP,A2DP
CODEC Code	aptX™ low latency, aptX™, SBC
Built-in Li-ion Battery	400mAh/3.7V
Charging Time	About 2.5 hours
Stand-by Time under Bluetooth mode	200 hours
Working Time	About 24 hours (50% Volume, ANC:OFF, BT:ON)
	About 12 hours (50% Volume, ANC:ON, BT:ON)
	About 16 hours (50% Volume, ANC:ON, AUX:ON)
Net Weight	About 268.8 g
Dimension	210*155*83 mm

Notes:

The actual using time will be different according to the ambient and music style.

10. Attentions and Q & A :

A. How to reconnect and operation when failed to reconnect ?

When A3 connected with your mobile phone successfully at the first time, it will search and reconnect the paired device automatically when power on. If failed, please pair to connect again.

B. How to Delete paired records.

Power on , long press “MFB & Volume+ & Volume –“ buttons 5 seconds at the same time to delete paired records (Red and Blue LED flashes once,). Pls try to delete paired records when have connection problems.

C. What's the password for pairing?

Some connection devices require password for pairing, pls try 0000 (four zero), 8888 (four eight), 1111 (four one) or 1234 (one two three four).

D. Which devices could charge for the headphone?

Any car charger, power bank, PC etc which meet DC 5V , charging current more than 500mA could be charge for this item.