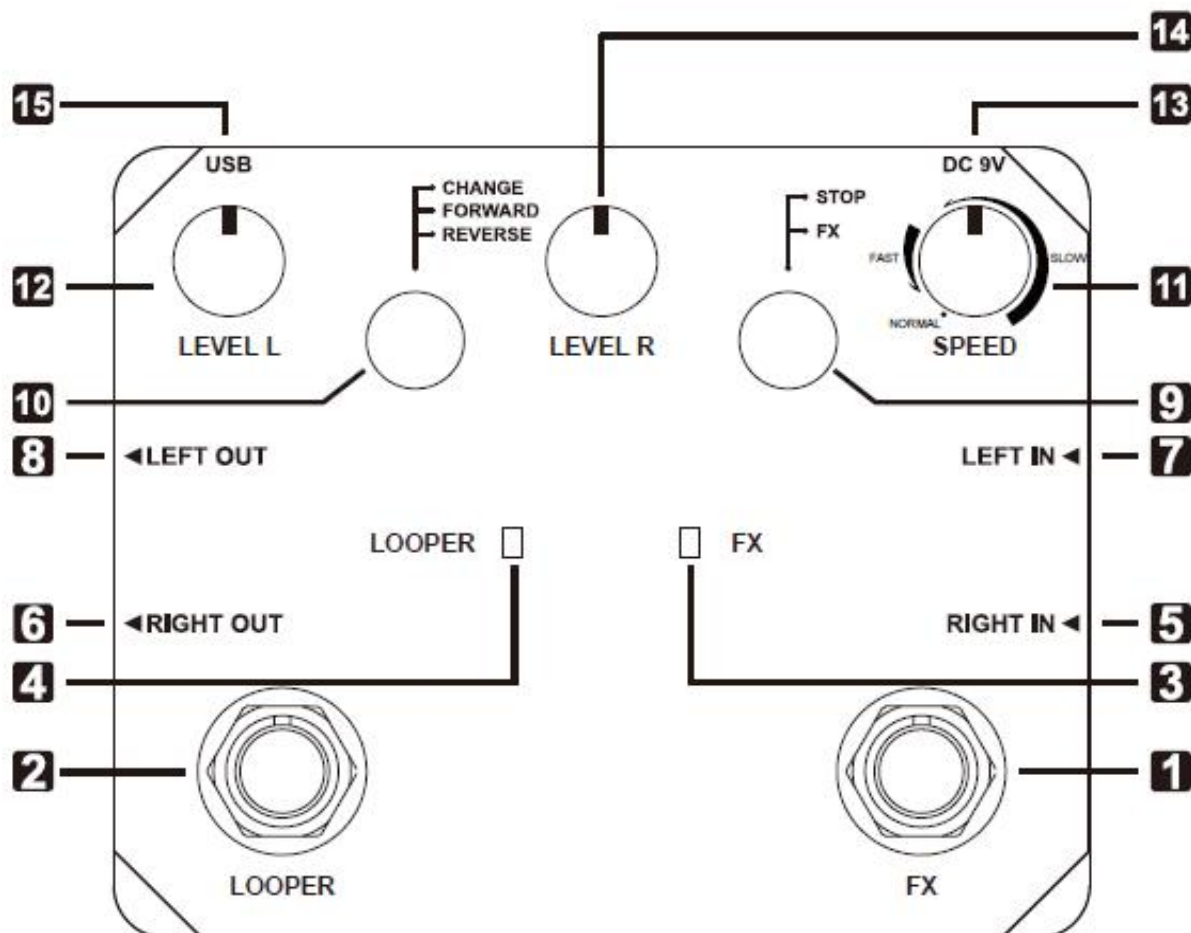


TWIN LOOPER manual

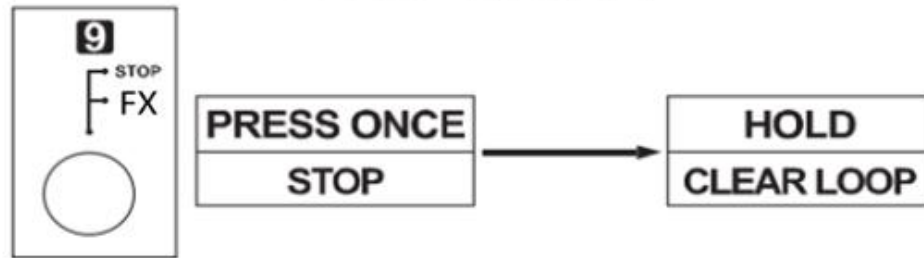
Thanks for purchasing our product, please read the operating instructions below carefully before operate.



1. Right footswitch

- 1) Right foot switch functions need to use with **9** mode selection switch: FX / STOP
- 2) When the mode selection switch select STOP mode, right footswitch is used to stop recording and playback, or clear recording data, Using with **4** LOOPER indicator LED, this operation can not be restored.
- 3) When recording (LOOPER indicator LED is red) or playing (LOOPER indicator LED is green), press right footswitch once, recording or playing will immediately stop, LOOPER indicator LED is green and flashing.
- 4) If stopped (LOOPER indicator LED is green and flashing), press right footswitch about 2 seconds, LOOPER indicator LED flashes twice, then all of the recorded data is cleared.

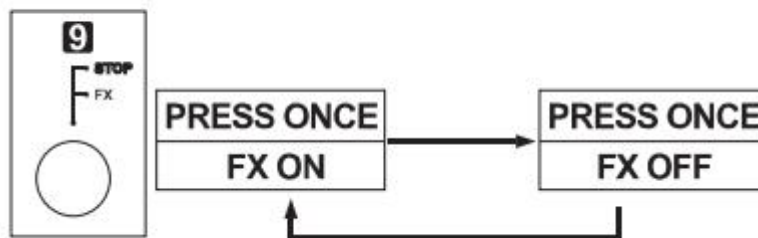
STOP MODE



5) When the mode selection switch selects the FX mode, the right footswitch control effect on and off, using with the FX status indicator LED.

6) If the FX LED lights up, indicate effect on, press once, effect turned off, presses again, effect turned on. Follow this cycle, see below diagram.

FX MODE

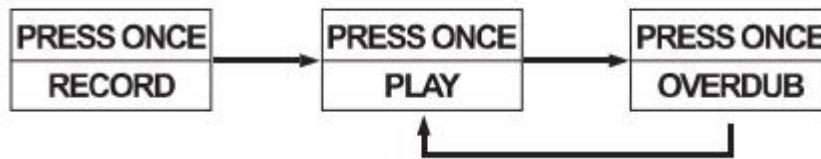


2、 Left footswitch

The left footswitch is used for recording, playback, overdub, Undo, Redo, stop, clearing and other operations, using with IOOPER indicator LED.

1) When power on, **4** LOOPER indicator LED off, indicate the pedal no recorded data, press left footswitch once, then red LED of **4** LOOPER indicator LED lights up, entering into recording state. After the recording is finished, press left footswitch again, then green LED of **4** LOOPER indicator LED lights up, entering playing state. The system will loop the recorded data. While it play to end of the recording, green light flashes , showing it has play to the end and restart the next playing. Press left footswitch at any time, red LED of **4** LOOPER indicator LED lights up enters into overdub state. That is overdub the input sound to the recordings. Under overdub state the recording data will be looped. Overdub operation unrestricted on this pedal, Under overdub state, press left footswitch, then green LED of **4** LOOPER indicator LED lights up, entering playback mode, follow this cycle. See below diagram.

REC/PLAY/OVERDUB



In recording mode, press left footswitch about 2 seconds, the current recorded data will be cleared, **4** LOOPER indicator LED flashes twice and then go out. In playing or overdub state, press left footswitch about 2 seconds **4** LOOPER indicator LED flashes twice and then undo (or redo) the recorded data last time.

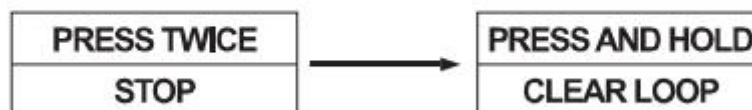
For example, you just overdub a recording data, but it'd not good. You do not want this. Then press left footswitch about 2 seconds **4** LOOPER indicator LED flashes twice, and then delete. (undo overdub operation latest) the overdub data, however, now you want to recover the data, so press left footswitch about 2 seconds **4** LOOPER indicator LED flashes twice, then recover (just redo overdub operation latest) the overdub data, follow this cycle, see below diagram.

UNDO/REDO



Press the left footswitch twice in any state, green LED of **4** LOOPER indicator LED lights up and system enters the stop mode. while stopped, press left footswitch about 2 seconds, recording data will be cleared. **4** LOOPER indicator LED lights off, the operating data can not be recovered. See below diagram.


STOP/CLEAR



3, FX LED

- 1) FX effect status indicators LED need to work with **4** right footswitch.
- 2) If it is forward playing and the effect is on, red FX LED lights up.
- 3) If it is reverse playing and the effect is on, green FX LED lights up.
- 4) If effect is off, FX LED goes off.

4. LOOPER status indicators LED

- 1) LOOPER status indicators LED need to work with  left footswitch.
- 2) In recording state: LOOPER indicator LED is red.
- 3) In playing state: LOOPER indicator LED is green.
- 4) In overdub state: LOOPER indicator LED is red.
- 5) In stop state: if there is recorded data, LOOPER status indicator LED is flashing green, if no recorded data, LOOPER status indicator LED goes off.
- 6) While Undo, Redo operation, LOOPER status indicator LED will be green and flashing twice indicate operation completed.
- 7) In the end of the playing, LOOPER status indicator LED will be green and flashing once indicate play to the end and restart the next play.

5、 Right input jack

1/4" Right input jack, connect guitar.

6、 Right output jack

1/4" Right output jack, connect amplifier.


7、 Left input jack

1/4" Left input jack, connect guitar.

8、 Left output jack

1/4" Left output jack, connect amplifier

9、 Mode selection switch: FX/STOP

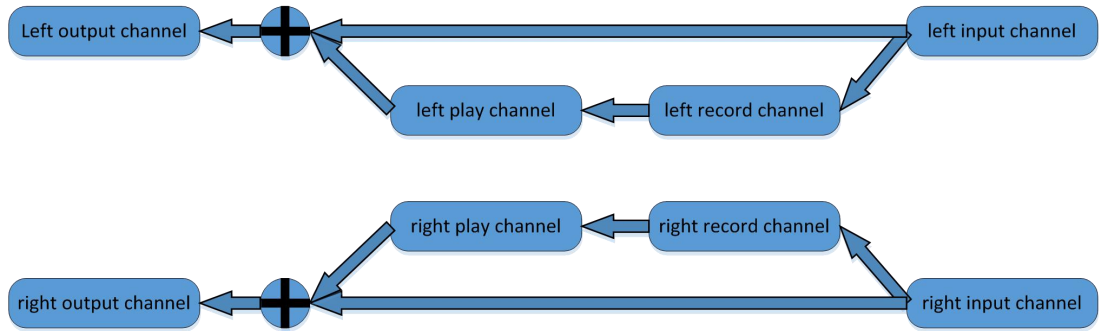
1) Mode selection switch need to work with  right footswitch.

2) When the mode selection switch select STOP mode, the right footswitch is used to stop recording and playing ,or clear recording data; when the mode selection switch select FX mode, right footswitch is used to turn on or off effect. More details please refer to part 1.

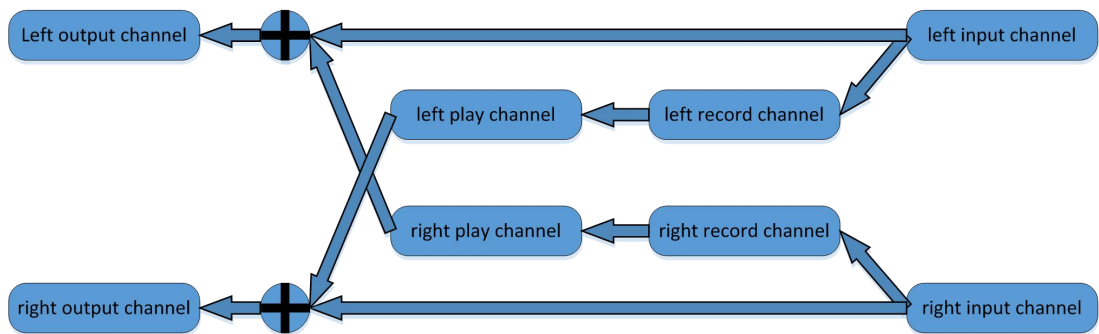
10、 Mode selection switch

1) When the mode selection switch did not select CHANGE mode, the left output channel sound com from the left play channel, the right output channel sound com from the right play channel.,See picture 1.

When the mode selection switch select CHANGE mode, the left output channel sound com from the right play channel, the right output channel sound com form the left play channel. See picture 2.



(1)



(2)

2) When the mode selection switch select FORWARD mode, if the effect is on, **3** FX effect indicator LED is red, meaning that it is playing in the normal mode, such as when the sound recording is: 123, then 123 will be played.

3) When the mode selection switch select REVERSE mode, if the effect is on, **5** FX effect indicator LED is green, meaning that it is playing in the opposite direction, such as when the sound recording is: 123, then 321 will be played.

11, recording, playing speed knob

11 gears of recording and playing speed, turn knob to leftmost means NORMAL, then to the right means FAST. Three kinds of FAST speed, faster and faster. The fastest speed is 1.5 times than NORMAL. Then further right, means SLOW. Seven gears of SLOW speed. Slower and slower. The slowest speed is 2 times than NORAMAL.

Note: Since the 11 gears knob may go awry when using, it might fail to select the type of effect, or there is intermittent sound. Then you need to re-calibrate the 11 gears knob.

Follow these steps:

1) Pressing the left and right footswitches, and plug in the 9V power supply, then yellow LED lights up shows the state of correction.

- 2) turn The 11 gears knob to the leftmost (minimum), press the right footswitch once, the green light turned into yellow light. Then the 1st gear has been corrected.
- 3) Turn the 11 gears knob to the right (turn to the second gear), press the right footswitch once, the green LED turned into yellow. Then the second gear has been corrected.
- 4) follow above, After the all 11 gears corrected, the system will automatically restart and enter into normal operating mode.

12, Left channel output volume control knob

The left play channel sound will turn off when turn the knob to leftmost, The left play channel sound will maximum when turn the knob to rightmost.

13, 9V DC power

This pedal uses 9 voltage and over 500mA DC power supply.

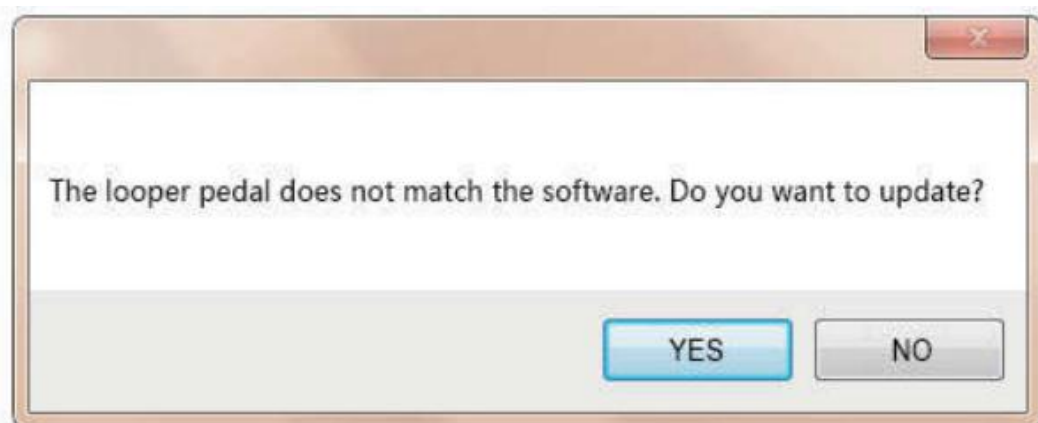
14, Right channel output volume control knob

The right play channel sound will turn off when turn the knob to leftmost, The right play channel sound will maximum when turn the knob to rightmost.

15, USB interface

When connect to computer with USB cable, two yellow LED will light up and at the same time, you can operate the user software .

Because our software will continue to upgrade, so if the firmware on the pedal is not latest, when the pedal connect to computer with USB cable then a dialog box appears to confirm upgrade and just click "YES" to complete the upgrade. See below diagram.



After the upgrade completed, it'll enter into the normal user interface. IMPORT button is to download files from computer to the pedal. EXPORT button is to upload recorded data from the pedal to the computer. only Supports * .WAV file format now. See below diagram.



When practicing at home, you can download a sound you like to play as background sound, convenient and practical. You can also upload recorded sound to computer as creative materials.

Working Current: 90mA

Input impedance: 470K Ω

Output impedance: 100 Ω

Weight: 522g (with box)

Dimensions: 116*90*35mm

Accessories: 1. Manual

2. USB cable (upload and download with the computer. Please

download the software at <http://www.rowinmusic.com/support.php>)

Note: Only WAV audio file can be uploaded to the looper.